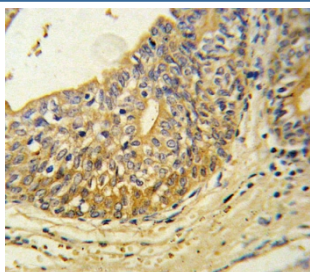


## Endothelin B Receptor Antibody / EDNRB (F54884)

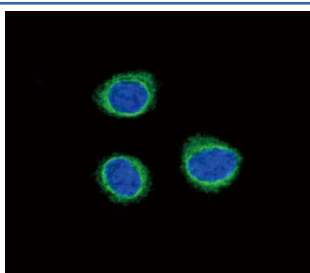
Catalog No.	Formulation	Size
F54884-0.4ML	In 1X PBS, pH 7.4, with 0.09% sodium azide	0.4 ml
F54884-0.08ML	In 1X PBS, pH 7.4, with 0.09% sodium azide	0.08 ml

[Bulk quote request](#)

<b>Availability</b>	1-3 business days
<b>Species Reactivity</b>	Human, Mouse
<b>Format</b>	Purified
<b>Clonality</b>	Polyclonal (rabbit origin)
<b>Isotype</b>	Rabbit Ig
<b>Purity</b>	Purified
<b>UniProt</b>	P24530
<b>Applications</b>	Flow Cytometry : 1:10-1:50 (1x10 <sup>6</sup> cells) Immunofluorescence : 1:10-1:50 Immunohistochemistry (FFPE) : 1:10-1:50 Western Blot : 1:500-1:1000
<b>Limitations</b>	This Endothelin B Receptor antibody is available for research use only.



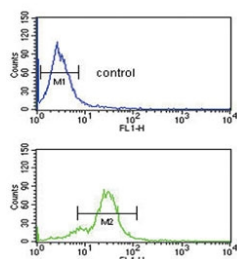
IHC testing of FFPE human prostate carcinoma tissue with Endothelin B Receptor antibody. HIER: steam section in pH6 citrate buffer for 20 min and allow to cool prior to staining.



Immunofluorescent staining of human HEK292 cells with Endothelin B Receptor antibody (green) and DAPI nuclear stain (blue).

kDa  
130  
72  
55  
36  
28  
17

Western blot testing of mouse cerebellum tissue lysate with Endothelin B Receptor antibody. Predicted molecular weight ~50 kDa.



Flow cytometry testing of human MDA-MB-435 cells with Endothelin B Receptor antibody; Blue=isotype control, Green= Endothelin B Receptor antibody.

## Description

EDNRB is a G protein-coupled receptor which activates a phosphatidylinositol-calcium second messenger system. Its ligand, endothelin, consists of a family of three potent vasoactive peptides: ET1, ET2, and ET3. Studies suggest that the multigenic disorder, Hirschsprung disease type 2, is due to mutations in the endothelin receptor type B gene.

## Application Notes

The stated application concentrations are suggested starting points. Titration of the Endothelin B Receptor antibody may be required due to differences in protocols and secondary/substrate sensitivity.

## Immunogen

A portion of amino acids 409-439 from the human protein was used as the immunogen for the Endothelin B Receptor antibody.

## Storage

Aliquot the Endothelin B Receptor antibody and store frozen at -20oC or colder. Avoid repeated freeze-thaw cycles.