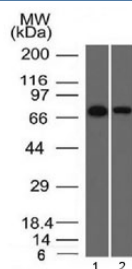


## Endoglin Antibody / CD105 [clone ENG/1327] (V3341)

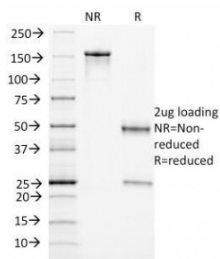
Catalog No.	Formulation	Size
V3341-100UG	0.2 mg/ml in 1X PBS with 0.1 mg/ml BSA (US sourced) and 0.05% sodium azide	100 ug
V3341-20UG	0.2 mg/ml in 1X PBS with 0.1 mg/ml BSA (US sourced) and 0.05% sodium azide	20 ug
V3341SAF-100UG	1 mg/ml in 1X PBS; BSA free, sodium azide free	100 ug

[Bulk quote request](#)

<b>Availability</b>	1-3 business days
<b>Species Reactivity</b>	Human
<b>Format</b>	Purified
<b>Host</b>	Mouse
<b>Clonality</b>	Monoclonal (mouse origin)
<b>Isotype</b>	Mouse IgG1, kappa
<b>Clone Name</b>	ENG/1327
<b>Purity</b>	Protein G affinity chromatography
<b>UniProt</b>	P17813
<b>Localization</b>	Cell surface, cytoplasmic
<b>Applications</b>	Western Blot : 1-2ug/ml
<b>Limitations</b>	This Endoglin antibody is available for research use only.



Western blot testing of human 1) HeLa and 2) A431 cell lysate with Endoglin antibody (clone ENG/1327). Observed molecular weight: 70/90 kDa (monomer, unmodified/glycosylated); 140-180 kDa (dimer, unmodified/glycosylated).



SDS-PAGE Analysis of Purified, BSA-Free Endoglin Antibody (clone ENG/1327).  
Confirmation of Integrity and Purity of the Antibody.

## Description

CD105/Endoglin is a Type I membrane glycoprotein located on cell surfaces and is part of the TGF-beta receptor complex. This protein has been found on endothelial cells, activated macrophages, fibroblasts, and smooth-muscle cells. Endoglin has a role in the development of the cardiovascular system and in vascular remodeling. Its expression is regulated during heart development. It is highly expressed in endothelial cells during tumor angiogenesis and inflammation, with weak or negative expression in vascular endothelium of normal tissues. Angiogenesis is a promising prognostic marker in a variety of tumors. Endoglin is a more specific and sensitive marker for tumor angiogenesis than CD31 or CD34, as it labels only newly-formed blood vessels and may serve as a prognostic marker for Prostate Adenocarcinoma, and cancers of the lung, stomach, breast, and brain.

## Application Notes

Titering of the Endoglin antibody may be required for optimal performance.

## Immunogen

A partial recombinant protein corresponding to amino acids 74-251 of human CD105/Endoglin was used as the immunogen for the Endoglin antibody.

## Storage

Store the Endoglin antibody at 2-8°C (with azide) or aliquot and store at -20°C or colder (without azide).