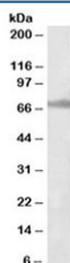


ENC1 Antibody (R36297)

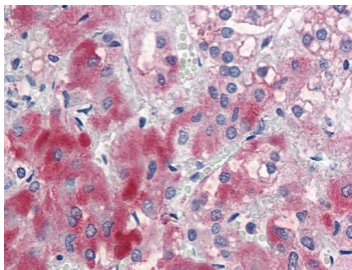
Catalog No.	Formulation	Size
R36297-100UG	0.5 mg/ml in 1X TBS, pH7.3, with 0.5% BSA (US sourced) and 0.02% sodium azide	100 ug

[Bulk quote request](#)

Availability	1-3 business days
Species Reactivity	Human, Rat
Predicted Reactivity	Dog, Pig, Cow
Format	Antigen affinity purified
Clonality	Polyclonal (goat origin)
Isotype	Goat Ig
Purity	Antigen affinity
Gene ID	8507
Localization	Nuclear, cytoplasmic
Applications	Western Blot : 1-3ug/ml IHC (FFPE) : 5ug/ml ELISA (peptide) LOD : 1:128000
Limitations	This ENC1 antibody is available for research use only.



Western blot testing of rat ovary lysate with ENC1 antibody at 1ug/ml. Predicted molecular weight: ~66 kDa.



IHC testing of FFPE human adrenal gland tissue with ENC1 antibody at 5ug/ml.
Required HIER: steamed antigen retrieval with pH6 citrate buffer; AP-staining.

Description

Additional name(s) for this target protein: Ectodermal-neural cortex 1

Application Notes

Optimal dilution of the ENC1 antibody should be determined by the researcher.

Immunogen

Amino acids TSVSHDKLPKVQC were used as the immunogen for this ENC1 antibody.

Storage

Aliquot and store the ENC1 antibody at -20oC.