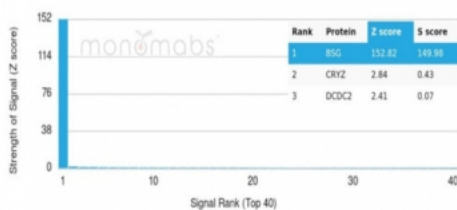


Emmprin Antibody / BSG / CD147 [clone BSG/7950] (V4595)

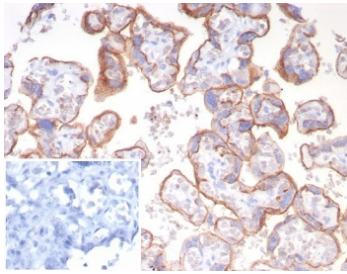
Catalog No.	Formulation	Size
V4595-100UG	0.2 mg/ml in 1X PBS with 0.1 mg/ml BSA (US sourced), 0.05% sodium azide	100 ug
V4595-20UG	0.2 mg/ml in 1X PBS with 0.1 mg/ml BSA (US sourced), 0.05% sodium azide	20 ug
V4595SAF-100UG	1 mg/ml in 1X PBS; BSA free, sodium azide free	100 ug

[Bulk quote request](#)

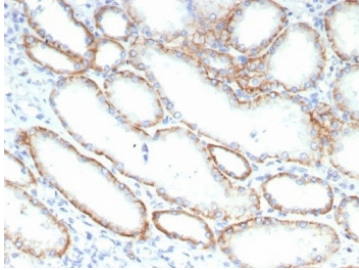
Availability	1-3 business days
Species Reactivity	Human
Format	Purified
Host	Mouse
Clonality	Monoclonal (mouse origin)
Isotype	Mouse IgG
Clone Name	BSG/7950
Purity	Protein A/G affinity
UniProt	P35613
Localization	Cell surface
Applications	Immunohistochemistry (FFPE) : 1-2ug/ml for 30 min at RT Western Blot : 2-4ug/ml
Limitations	This Emmprin antibody is available for research use only.



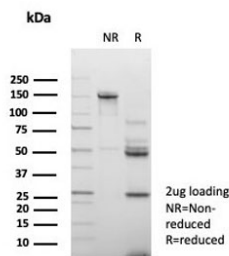
Analysis of a HuProt(TM) microarray containing more than 19,000 full-length human proteins using Emmprin antibody (clone BSG/7950). Z- and S- Score: The Z-score represents the strength of a signal that a monoclonal antibody (in combination with a fluorescently-tagged anti-IgG secondary antibody) produces when binding to a particular protein on the HuProt(TM) array. Z-scores are described in units of standard deviations (SD's) above the mean value of all signals generated on that array. If targets on HuProt(TM) are arranged in descending order of the Z-score, the S-score is the difference (also in units of SD's) between the Z-score. S-score therefore represents the relative target specificity of a mAb to its intended target. A mAb is considered to specific to its intended target, if the mAb has an S-score of at least 2.5. For example, if a mAb binds to protein X with a Z-score of 43 and to protein Y with a Z-score of 14, then the S-score for the binding of that mAb to protein X is equal to 29.



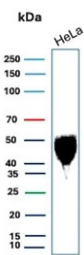
IHC staining of FFPE human placental tissue with Emmprin antibody (clone BSG/7950) at 2ug/ml. Inset: PBS used in place of primary Ab (secondary Ab negative control).
HIER: boil tissue sections in pH 9 10mM Tris with 1mM EDTA for 20 min and allow to cool before testing.



IHC staining of FFPE human renal cell carcinoma tissue with Emmprin antibody (clone BSG/7950) at 2ug/ml. HIER: boil tissue sections in pH 9 10mM Tris with 1mM EDTA for 20 min and allow to cool before testing.



SDS-PAGE analysis of purified, BSA-free Emmprin antibody (clone BSG/7950) as confirmation of integrity and purity.



Western blot testing of human HeLa cell lysate with Emmprin antibody. Predicted molecular weight: ~27 kDa (unmodified), 43-66 kDa (glycosylated).

Description

Emmprin is expressed more intensely on thymocytes than on mature peripheral blood T cells. It is important in spermatogenesis, embryo implantation, neural network formation, and tumor progression. It stimulates the production of interstitial collagenase, gelatinase A, stromelysin-1 and various metalloproteinases (MMPs) by fibroblasts. These enzymes are important factors in cancer invasion and metastasis.

Application Notes

Optimal dilution of the Emmprin antibody should be determined by the researcher.

Immunogen

Recombinant full-length human protein was used as the immunogen for the Emmprin antibody.

Storage

Aliquot the Emmprin antibody and store frozen at -20oC or colder. Avoid repeated freeze-thaw cycles.

