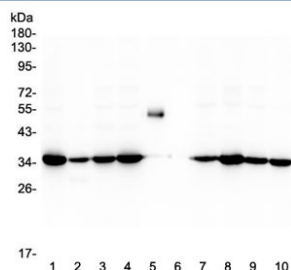


Emerin Antibody [clone 5A10] (RQ4516)

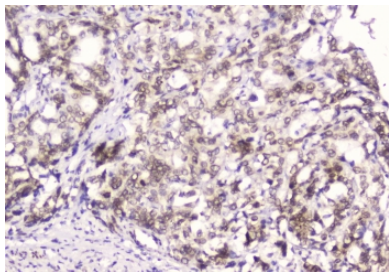
Catalog No.	Formulation	Size
RQ4516	0.5mg/ml if reconstituted with 0.2ml sterile DI water	100 ug

Bulk quote request

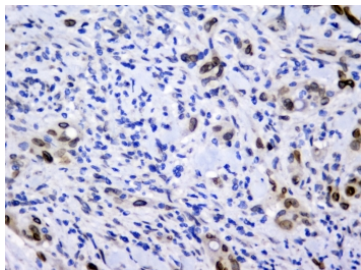
Availability	1-3 business days
Species Reactivity	Human
Format	Purified
Host	Mouse
Clonality	Monoclonal (mouse origin)
Isotype	Mouse IgG1
Clone Name	5A10
Purity	Protein G affinity
Buffer	Lyophilized from 1X PBS with 2% Trehalose and 0.025% sodium azide
UniProt	P50402
Localization	Nuclear membrane
Applications	Western Blot : 0.5-1ug/ml Immunohistochemistry (FFPE) : 1-2ug/ml
Limitations	This Emerin antibody is available for research use only.



Western blot testing of human 1) HeLa, 2) placenta, 3) Caco-2, 4) HepG2, 5) Rabbit IgG, 6) marker, 7) Jurkat, 8) MDA-MB-453, 9) SK-OV-3 and 10) U-87 MG lysate with Emerin antibody at 0.5ug/ml. Expected molecular weight: 29-34 kDa.



IHC testing of FFPE human gastric cancer with Emerin antibody at 2ug/ml. HIER: boil tissue sections in pH6, 10mM citrate buffer, for 10-20 min followed by cooling at RT for 20 min.



IHC testing of FFPE human rectal cancer with Emerin antibody at 2ug/ml. HIER: boil tissue sections in pH6, 10mM citrate buffer, for 10-20 min followed by cooling at RT for 20 min.

Description

Stabilizes and promotes the formation of a nuclear actin cortical network. Stimulates actin polymerization in vitro by binding and stabilizing the pointed end of growing filaments. Inhibits beta-catenin activity by preventing its accumulation in the nucleus. Acts by influencing the nuclear accumulation of beta- catenin through a CRM1-dependent export pathway. Links centrosomes to the nuclear envelope via a microtubule association. EMD and BAF are cooperative cofactors of HIV-1 infection. Association of EMD with the viral DNA requires the presence of BAF and viral integrase. The association of viral DNA with chromatin requires the presence of BAF and EMD. Required for proper localization of non-farnesylated prelamins A/C. [UniProt]

Application Notes

Optimal dilution of the Emerin antibody should be determined by the researcher.

Immunogen

Amino acids MDNYADLSDELTTLLRRYNIPHGPVVGSTRRLYEKKIFEYETQRRRL were used as the immunogen for the Emerin antibody.

Storage

After reconstitution, the Emerin antibody can be stored for up to one month at 4°C. For long-term, aliquot and store at -20°C. Avoid repeated freezing and thawing.