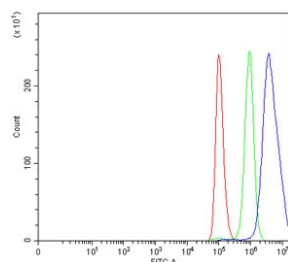


Embryonic ectoderm development protein Antibody / EED (RQ7166)

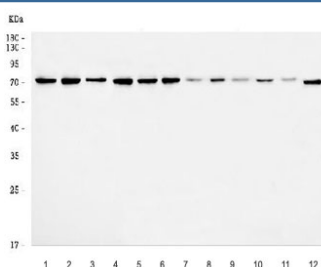
Catalog No.	Formulation	Size
RQ7166	0.5mg/ml if reconstituted with 0.2ml sterile DI water	100 ug

Bulk quote request

Availability	1-3 business days
Species Reactivity	Human, Mouse, Rat
Format	Antigen affinity purified
Clonality	Polyclonal (rabbit origin)
Isotype	Rabbit IgG
Purity	Antigen affinity purified
Buffer	Lyophilized from 1X PBS with 2% Trehalose
UniProt	O75530
Applications	Western Blot : 0.5-1ug/ml Flow Cytometry : 1-3ug/million cells Direct ELISA : 0.1-0.5ug/ml
Limitations	This Embryonic ectoderm development protein antibody is available for research use only.



Flow cytometry testing of human A549 cells with Embryonic ectoderm development protein antibody at 1ug/million cells (blocked with goat sera); Red=cells alone, Green=isotype control, Blue= Embryonic ectoderm development protein antibody.



Western blot testing of 1) human HeLa, 2) human HepG2, 3) human K562, 4) human Caco-2, 5) human SiHa, 6) human RT4, 7) rat brain, 8) rat heart, 9) rat testis, 10) rat C6, 11) mouse brain and 12) mouse NIH 3T3 cell lysate with Embryonic ectoderm development protein antibody. Expected molecular weight: 30~65 kDa (multiple isoforms).

Description

Polycomb protein EED is a protein that in humans is encoded by the EED gene. It is a member of the Polycomb-group (PcG) family. PcG family members form multimeric protein complexes, which are involved in maintaining the transcriptional repressive state of genes over successive cell generations. This protein interacts with enhancer of zeste 2, the cytoplasmic tail of integrin beta-7, immunodeficiency virus type 1 (HIV-1) MA protein, and histone deacetylase proteins. Furthermore, this protein mediates repression of gene activity through histone deacetylation, and may act as a specific regulator of integrin function. Two transcript variants encoding distinct isoforms have been identified for this gene.

Application Notes

Optimal dilution of the Embryonic ectoderm development protein antibody should be determined by the researcher.

Immunogen

Recombinant human protein (amino acids K77-R441) was used as the immunogen for the Embryonic ectoderm development protein antibody.

Storage

After reconstitution, the Embryonic ectoderm development protein antibody can be stored for up to one month at 4oC. For long-term, aliquot and store at -20oC. Avoid repeated freezing and thawing.