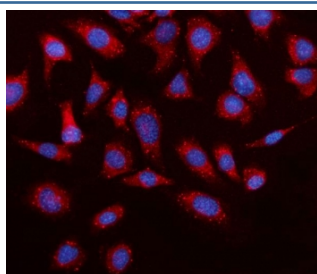


## Elovl4 Antibody (RQ6478)

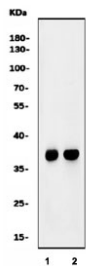
Catalog No.	Formulation	Size
RQ6478	0.5mg/ml if reconstituted with 0.2ml sterile DI water	100 ug

**Bulk quote request**

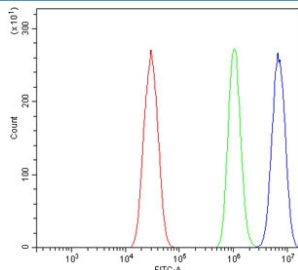
<b>Availability</b>	1-3 business days
<b>Species Reactivity</b>	Mouse, Rat
<b>Format</b>	Antigen affinity purified
<b>Host</b>	Rabbit
<b>Clonality</b>	Polyclonal (rabbit origin)
<b>Isotype</b>	Rabbit IgG
<b>Purity</b>	Affinity purified
<b>Buffer</b>	Lyophilized from 1X PBS with 2% Trehalose
<b>UniProt</b>	Q9EQC4
<b>Localization</b>	Cytoplasmic
<b>Applications</b>	Western Blot : 1-2ug/ml Immunofluorescence : 5ug/ml Flow Cytometry : 1-3ug/million cells Direct ELISA : 0.1-0.5ug/ml
<b>Limitations</b>	This Elovl4 antibody is available for research use only.



Immunofluorescent staining of FFPE mouse RM-1 cells with Elovl4 antibody (red) and DAPI nuclear stain (blue). HIER: steam section in pH6 citrate buffer for 20 min.



Western blot testing of 1) rat C6 and 2) mouse NIH 3T3 cell lysate with Elovl4 antibody. Predicted molecular weight ~37 kDa.



Flow cytometry testing of mouse HEPA1-6 cells with Elovl4 antibody at 1ug/million cells (blocked with goat sera); Red=cells alone, Green=isotype control, Blue= Elovl4 antibody.

## Description

Elongation of very long chain fatty acids protein 4 is a protein that in humans is encoded by the ELOVL4 gene. This gene encodes a membrane-bound protein which is a member of the ELO family, proteins which participate in the biosynthesis of fatty acids. Consistent with the expression of the encoded protein in photoreceptor cells of the retina, mutations and small deletions in this gene are associated with Stargardt-like macular dystrophy (STGD3) and autosomal dominant Stargardt-like macular dystrophy (ADMD), also referred to as autosomal dominant atrophic macular degeneration.

## Application Notes

Optimal dilution of the Elovl4 antibody should be determined by the researcher.

## Immunogen

An E. coli-derived mouse protein (amino acids M1-E312) was used as the immunogen for the Elovl4 antibody.

## Storage

After reconstitution, the Elovl4 antibody can be stored for up to one month at 4oC. For long-term, aliquot and store at -20oC. Avoid repeated freezing and thawing.