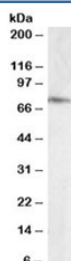


ELMO3 Antibody (R36225)

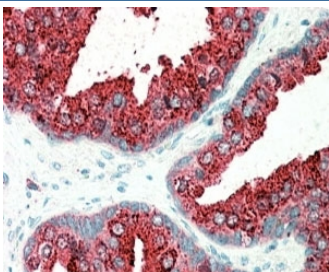
Catalog No.	Formulation	Size
R36225-100UG	0.5 mg/ml in 1X TBS, pH7.3, with 0.5% BSA (US sourced) and 0.02% sodium azide	100 ug

[Bulk quote request](#)

Availability	1-3 business days
Species Reactivity	Human
Predicted Reactivity	Dog
Format	Antigen affinity purified
Host	Goat
Clonality	Polyclonal (goat origin)
Isotype	Goat Ig
Purity	Antigen affinity
Gene ID	79767
Applications	Western Blot : 0.1-0.3ug/ml Immunohistochemistry (FFPE) : 5-10ug/ml ELISA (peptide) LOD : 1:16000
Limitations	This ELMO3 antibody is available for research use only.



Western blot testing of human hippocampus lysate with ELMO3 antibody at 0.1ug/ml.
Predicted molecular weight: ~70kDa.



IHC staining of FFPE human prostate with ELMO3 antibody at 5ug/ml. HIER: steamed with pH6 citrate buffer, AP-staining. Vesiculate staining in the cytoplasm of secretory cells is seen.

Description

Additional name(s) for this target protein: Engulfment and cell motility 3

Application Notes

Optimal dilution of the ELMO3 antibody should be determined by the researcher.

Immunogen

Amino acids TNFNFCYDCSIAEP were used as the immunogen for this ELMO3 antibody.

Storage

Aliquot and store the ELMO3 antibody at -20oC.