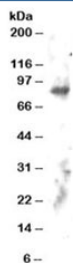


## ELMO2 Antibody (R35039)

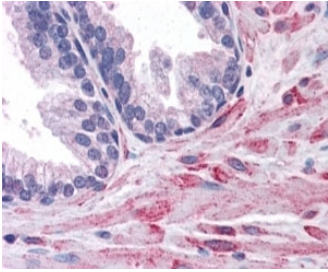
Catalog No.	Formulation	Size
R35039-100UG	0.5 mg/ml in 1X TBS, pH7.3, with 0.5% BSA (US sourced) and 0.02% sodium azide	100 ug

[Bulk quote request](#)

<b>Availability</b>	1-3 business days
<b>Species Reactivity</b>	Human
<b>Predicted Reactivity</b>	Cow, Dog, Mouse, Pig, Rat
<b>Format</b>	Antigen affinity purified
<b>Host</b>	Goat
<b>Clonality</b>	Polyclonal (goat origin)
<b>Isotype</b>	Goat Ig
<b>Purity</b>	Antigen affinity
<b>Gene ID</b>	63916
<b>Applications</b>	Western Blot : 1-3ug/ml Immunohistochemistry (FFPE) : 3-6ug/ml ELISA (peptide) LOD : 1:32000
<b>Limitations</b>	This ELMO2 antibody is available for research use only.



Western blot testing of human brain lysate with ELMO2 antibody at 2ug/ml. Predicted molecular weight: ~82kDa.



IHC staining of FFPE human prostate with ELMO2 antibody at 4ug/ml. HIER: steamed with pH6 citrate buffer, AP-staining. Pixulated staining in the cytoplasm of stroma cells is seen.

## Description

Additional name(s) for this target protein: Engulfment and cell motility 2

## Application Notes

Optimal dilution of the ELMO2 antibody should be determined by the researcher.

## Immunogen

Amino acids PKEPSSYDFVYHYG were used as the immunogen for this ELMO2 antibody.

## Storage

Aliquot and store the ELMO2 antibody at -20oC.