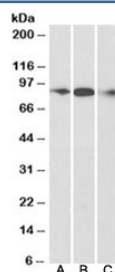


ELMO1 Antibody (R35038)

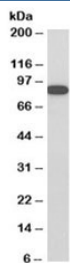
Catalog No.	Formulation	Size
R35038-100UG	0.5 mg/ml in 1X TBS, pH7.3, with 0.5% BSA (US sourced) and 0.02% sodium azide	100 ug

[Bulk quote request](#)

Availability	1-3 business days
Species Reactivity	Human, Mouse, Rat, Cow, Dog, Zebrafish
Predicted Reactivity	Dog
Format	Antigen affinity purified
Host	Goat
Clonality	Polyclonal (goat origin)
Isotype	Goat Ig
Purity	Antigen affinity
Gene ID	9844
Applications	Western Blot : 0.1-0.3ug/ml Immunoprecipitation : suitable ELISA (peptide) LOD : 1:128000
Limitations	This ELMO1 antibody is available for research use only.



Western blot testing of human frontal cortex [A], mouse [B] and rat [C] brain lysate with ELMO1 antibody at 0.3ug/ml. Predicted molecular weight: ~84kDa.



Western blot testing of Jurkat cell lysate with ELMO1 antibody at 0.3ug/ml. Predicted molecular weight: ~84kDa.

Description

Additional name(s) for this target protein: Engulfment and cell motility 1

Application Notes

Optimal dilution of the ELMO1 antibody should be determined by the researcher.

Immunogen

Amino acids PKEPSNYDFVYDCN were used as the immunogen for this ELMO1 antibody.

Storage

Aliquot and store the ELMO1 antibody at -20oC.