

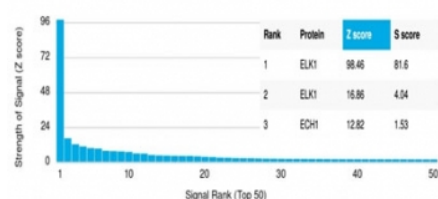
ELK1 Antibody / ETS Like-1 protein Elk-1 [clone PCR-ELK1-1D9] (V9193)

Catalog No.	Formulation	Size
V9193-100UG	0.2 mg/ml in 1X PBS with 0.1 mg/ml BSA (US sourced), 0.05% sodium azide	100 ug
V9193-20UG	0.2 mg/ml in 1X PBS with 0.1 mg/ml BSA (US sourced), 0.05% sodium azide	20 ug
V9193SAF-100UG	1 mg/ml in 1X PBS; BSA free, sodium azide free	100 ug

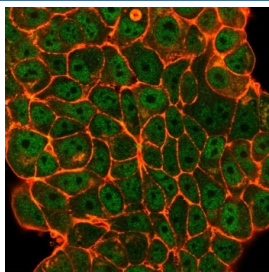
[Bulk quote request](#)

Availability	1-3 business days
Species Reactivity	Human
Format	Purified
Host	Mouse
Clonality	Monoclonal (mouse origin)
Isotype	Mouse IgG2b
Clone Name	PCR-ELK1-1D9
Purity	Protein A/G affinity
UniProt	P19419
Localization	Nucleus
Applications	Western Blot : 1-2ug/ml Immunofluorescence : 1-2ug/ml
Limitations	This ELK1 antibody is available for research use only.

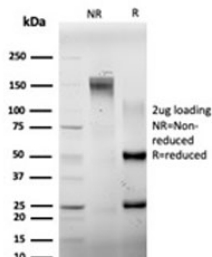
Human Protein Microarray Specificity Validation



Analysis of HuProt(TM) microarray containing more than 19,000 full-length human proteins using ELK1 antibody (clone PCR-ELK1-1D9). These results demonstrate the foremost specificity of the PCR-ELK1-1D9 mAb. Z- and S- score: The Z-score represents the strength of a signal that an antibody (in combination with a fluorescently-tagged anti-IgG secondary Ab) produces when binding to a particular protein on the HuProt(TM) array. Z-scores are described in units of standard deviations (SD's) above the mean value of all signals generated on that array. If the targets on the HuProt(TM) are arranged in descending order of the Z-score, the S-score is the difference (also in units of SD's) between the Z-scores. The S-score therefore represents the relative target specificity of an Ab to its intended target.



Immunofluorescent staining of PFA-fixed human MCF-7 cells using ELK1 antibody (green, clone PCRP-ELK1-1D9) and phalloidin (red).



SDS-PAGE analysis of purified, BSA-free ELK1 antibody (clone PCRP-ELK1-1D9) as confirmation of integrity and purity.

Description

Ets-1 is the prototype member of a family of genes identified on the basis of homology to the v-Ets oncogene isolated from the E26 erythroblastosis virus. This family of genes currently includes Ets-1, Ets-2, Erg-1 3, Elk-1, Elf-1, Elf-5, NERF, PU.1, PEA3, ERM, FEV, ER8I, Fli-1, TEL, Spi-B, ESE-1, ESE-3A, Net, ABT1 and ERF. Members of the Ets gene family exhibit varied patterns of tissue expression, and share a highly conserved carboxy-terminal domain containing a sequence related to the SV40 large T antigen nuclear localization signal sequence. This conserved domain is essential for Ets-1 binding to DNA and is likely to be responsible for the DNA binding activity of all members of the Ets gene family. Several of these proteins have been shown to recognize similar motifs in DNA that share a centrally located 5 element.

Application Notes

Optimal dilution of the ELK1 antibody should be determined by the researcher.

Immunogen

Recombinant full-length human ELK1 protein was used as the immunogen for the ELK1 antibody.

Storage

Aliquot the ELK1 antibody and store frozen at -20oC or colder. Avoid repeated freeze-thaw cycles.