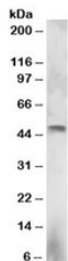


ELF3 Antibody (R35912)

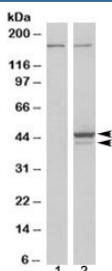
Catalog No.	Formulation	Size
R35912-100UG	0.5 mg/ml in 1X TBS, pH7.3, with 0.5% BSA (US sourced) and 0.02% sodium azide	100 ug

[Bulk quote request](#)

Availability	1-3 business days
Species Reactivity	Human
Format	Antigen affinity purified
Host	Goat
Clonality	Polyclonal (goat origin)
Isotype	Goat Ig
Purity	Antigen affinity
UniProt	P78545
Gene ID	1999
Applications	Western Blot : 3-5ug/ml ELISA (peptide) LOD : 1:32000
Limitations	This ELF3 antibody is available for research use only.



Western blot testing of NCI-H460 lysate with ELF3 antibody at 3ug/ml. Predicted molecular weight: ~42/39kDa (isoforms 1/2).



Western blot of HEK293 lysate overexpressing ELF3 probed with ELF3 antibody (mock transfection in lane 1). Predicted molecular weight: ~42/39kDa (isoforms 1/2).

Description

Additional name(s) for this target protein: E74-like factor 3, EPR-1, ERT

Application Notes

Optimal dilution of the ELF3 antibody should be determined by the researcher.

Immunogen

Amino acids SGWKEEVLQSRN were used as the immunogen for this ELF3 antibody. This sequence is common to isoforms 1 and 2.

Storage

Aliquot and store the ELF3 antibody at -20oC.