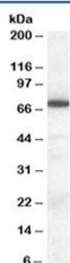


ELF1 Antibody (R33151)

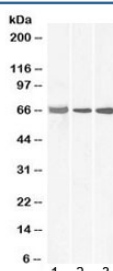
Catalog No.	Formulation	Size
R33151-100UG	0.5 mg/ml in 1X TBS, pH7.3, with 0.5% BSA (US sourced) and 0.02% sodium azide	100 ug

[Bulk quote request](#)

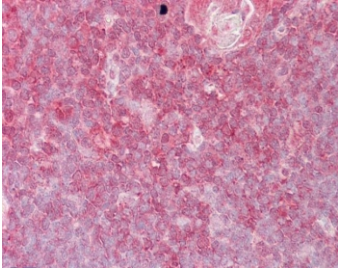
Availability	1-3 business days
Species Reactivity	Human, Mouse
Format	Antigen affinity purified
Clonality	Polyclonal (goat origin)
Isotype	Goat Ig
Purity	Antigen affinity
Gene ID	1997
Localization	Nuclear, cytoplasmic
Applications	Western Blot : 0.3-1ug/ml IHC (FFPE) : 2.5ug/ml ELISA (peptide) LOD : 1:64000
Limitations	This ELF1 antibody is available for research use only.



Western blot testing of human tonsil lysate with ELF1 antibody at 0.3ug/ml. Expected molecular weight: ~68 kDa (unmodified) up to ~80 kDa (phosphorylated/glycosylated cytoplasmic form) and up to ~98 kDa (phosphorylated/glycosylated nuclear form).



Western blot testing of 1) human lymph node, 2) human tonsil and 3) mouse thymus lysate with ELF1 antibody at 0.3ug/ml. Expected molecular weight: ~68 kDa (unmodified) up to ~80 kDa (phosphorylated/glycosylated cytoplasmic form) and up to ~98 kDa (phosphorylated/glycosylated nuclear form).



IHC testing of FFPE human thymus tissue with ELF1 antibody at 2.5ug/ml. Required HIER: steamed antigen retrieval with pH6 citrate buffer; AP-staining.

Description

Additional name(s) for this target protein: E74-like factor 1

Application Notes

Optimal dilution of the ELF1 antibody should be determined by the researcher.

Immunogen

Amino acids AMKQNELLEPNSE were used as the immunogen for this ELF1 antibody.

Storage

Aliquot and store the ELF1 antibody at -20oC.