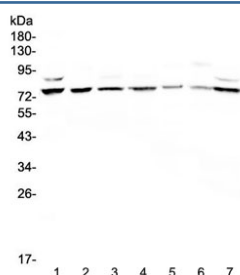


## Elf-1 Antibody / E74 like factor 1 (RQ4212)

Catalog No.	Formulation	Size
RQ4212	0.5mg/ml if reconstituted with 0.2ml sterile DI water	100 ug

**Bulk quote request**

<b>Availability</b>	1-3 business days
<b>Species Reactivity</b>	Human
<b>Predicted Reactivity</b>	Mouse, Rat
<b>Format</b>	Antigen affinity purified
<b>Clonality</b>	Polyclonal (rabbit origin)
<b>Isotype</b>	Rabbit IgG
<b>Purity</b>	Antigen affinity purified
<b>Buffer</b>	Lyophilized from 1X PBS with 2% Trehalose and 0.025% sodium azide
<b>UniProt</b>	P32519
<b>Localization</b>	Nuclear, cytoplasmic
<b>Applications</b>	Western Blot : 0.5-1ug/ml
<b>Limitations</b>	This Elf-1 antibody is available for research use only.



Western blot testing of human 1) HeLa, 2) COLO320, 3) A549, 4) PANC-1, 5) A431, 6) Jurkat and 7) 293T cell lysate with Elf-1 antibody at 0.5ug/ml. Expected molecular weight: ~68 kDa (unmodified) up to ~80 kDa (phosphorylated/glycosylated cytoplasmic form) and up to ~98 kDa (phosphorylated/glycosylated nuclear form).

## Description

E74-like factor 1 (ets domain transcription factor) is a protein that in humans is encoded by the ELF1 gene. It is mapped to chromosome 13q13. This gene encodes an E26 transformation-specific related transcription factor. The encoded protein is primarily expressed in lymphoid cells and acts as both an enhancer and a repressor to regulate transcription of various genes. Alternative splicing results in multiple transcript variants.

## Application Notes

Optimal dilution of the Elf-1 antibody should be determined by the researcher.

## Immunogen

Amino acids QPTQSPYPTQLFRTVHVVPVQAVPEGEAARTSTMQDE were used as the immunogen for the Elf-1 antibody.

## Storage

After reconstitution, the Elf-1 antibody can be stored for up to one month at 4°C. For long-term, aliquot and store at -20°C. Avoid repeated freezing and thawing.