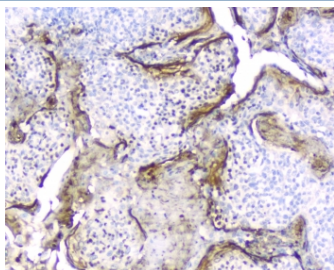


Elafin Antibody [clone C7] (RQ4509)

Catalog No.	Formulation	Size
RQ4509	0.5mg/ml if reconstituted with 0.2ml sterile DI water	100 ug

[Bulk quote request](#)

Availability	1-3 business days
Species Reactivity	Human
Format	Purified
Host	Mouse
Clonality	Monoclonal (mouse origin)
Isotype	Mouse IgG1
Clone Name	C7
Purity	Protein G affinity
Buffer	Lyophilized from 1X PBS with 2% Trehalose and 0.025% sodium azide
UniProt	P19957
Localization	Secreted
Applications	Immunohistochemistry (FFPE) : 1-2ug/ml Capture ELISA : 1-5ug/ml (human recombinant protein)
Limitations	This Elafin antibody is available for research use only.



IHC testing of FFPE human tonsil tissue with Elafin antibody at 2ug/ml. HIER: boil tissue sections in pH6, 10mM citrate buffer, for 10-20 min followed by cooling at RT for 20 min.

Description

Elafin, also known as peptidase inhibitor 3 or skin-derived antileukoprotease (SKALP), is a protein that in humans is encoded by the PI3 gene. This gene encodes an elastase-specific inhibitor that functions as an antimicrobial peptide

against Gram-positive and Gram-negative bacteria, and fungal pathogens. The protein contains a WAP-type four-disulfide core (WFDC) domain, and is thus a member of the WFDC domain family. Most WFDC gene members are localized to chromosome 20q12-q13 in two clusters: centromeric and telomeric. And this gene belongs to the centromeric cluster. Expression of this gene is upregulated by bacterial lipopolysaccharides and cytokines.

Application Notes

Optimal dilution of the Elafin antibody should be determined by the researcher.

Immunogen

Human Elafin/Skalp recombinant protein (amino acids A61-Q117) was used as the immunogen for the Elafin antibody.

Storage

After reconstitution, the Elafin antibody can be stored for up to one month at 4°C. For long-term, aliquot and store at -20°C. Avoid repeated freezing and thawing.