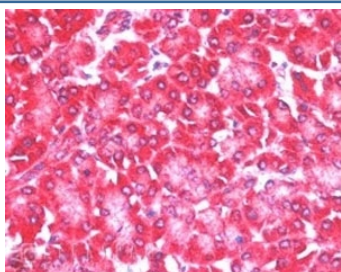


EIF4ENIF1 Antibody (R33145)

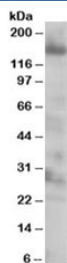
Catalog No.	Formulation	Size
R33145-100UG	0.5 mg/ml in 1X TBS, pH7.3, with 0.5% BSA (US sourced) and 0.02% sodium azide	100 ug

[Bulk quote request](#)

Availability	1-3 business days
Species Reactivity	Human
Predicted Reactivity	Mouse, Rat, Dog, Pig, Cow
Format	Antigen affinity purified
Host	Goat
Clonality	Polyclonal (goat origin)
Isotype	Goat Ig
Purity	Antigen affinity
Gene ID	56478
Applications	Western Blot : 0.25-0.5ug/ml Immunohistochemistry (FFPE) : 5-10ug/ml ELISA (peptide) LOD : 1:32000
Limitations	This EIF4ENIF1 antibody is available for research use only.



IHC staining of FFPE human pancreas with EIF4ENIF1 antibody with 5ug/ml. HIER: steamed with pH6 citrate buffer, AP-staining.



Western blot testing of 293 lysate with EIF4ENIF1 antibody at 0.25ug/ml. Expected molecular weight ~88/108 kDa (multiple isoforms but can be observed at ~140 kDa (possibly due to phosphorylation or high proline content-Ref 1).

Description

Additional name(s) for this target protein: Eukaryotic translation initiation factor 4E nuclear import factor 1

Application Notes

Optimal dilution of the EIF4ENIF1 antibody should be determined by the researcher.

Immunogen

Amino acids AKVISVDELEYRQ were used as the immunogen for this EIF4ENIF1 antibody.

Storage

Aliquot and store the EIF4ENIF1 antibody at -20oC.

References (1)