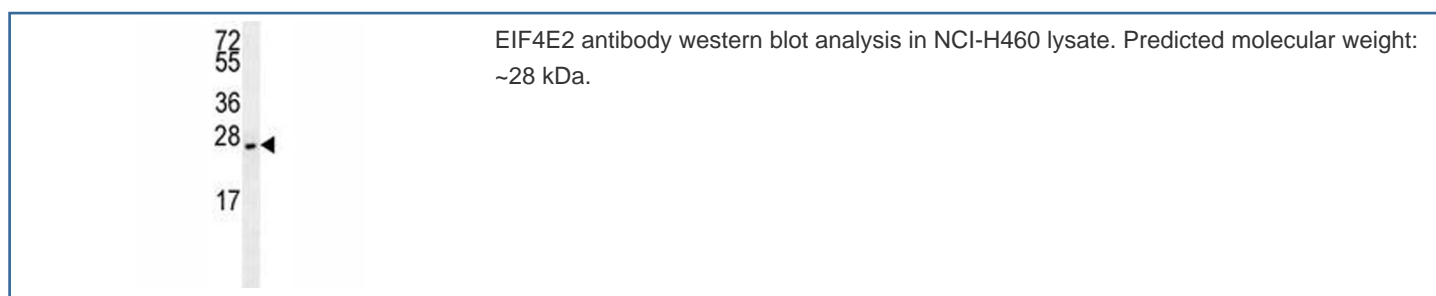


## EIF4E2 Antibody [clone 225CT3.1.3] (F40261)

Catalog No.	Formulation	Size
F40261-0.4ML	In 1X PBS, pH 7.4, with 0.09% sodium azide	0.4 ml
F40261-0.08ML	In 1X PBS, pH 7.4, with 0.09% sodium azide	0.08 ml

[Bulk quote request](#)

<b>Availability</b>	1-3 business days
<b>Species Reactivity</b>	Human
<b>Format</b>	Purified
<b>Clonality</b>	Monoclonal (mouse origin)
<b>Isotype</b>	Mouse IgG1, k
<b>Clone Name</b>	225CT3.1.3
<b>Purity</b>	Purified
<b>UniProt</b>	O60573
<b>Applications</b>	Western Blot : 1:100-1:250
<b>Limitations</b>	This EIF4E2 antibody is available for research use only.



### Description

EIF4E2 recognizes and binds the 7-methylguanosine-containing mRNA cap during an early step in the initiation of protein synthesis and facilitates ribosome binding by inducing the unwinding of the mRNAs secondary structures.

### Application Notes

Titration of the EIF4E2 antibody may be required due to differences in protocols and secondary/substrate sensitivity.

## **Immunogen**

This EIF4E2 antibody was produced from a mouse immunized with EIF4E2 recombinant protein.

## **Storage**

Aliquot the EIF4E2 antibody and store frozen at -20oC or colder. Avoid repeated freeze-thaw cycles.