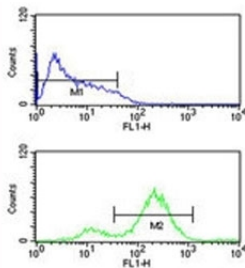


EIF4E Antibody (F47411)

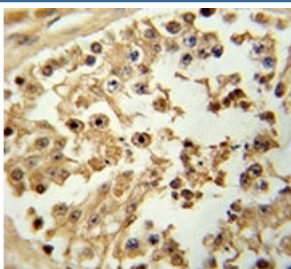
Catalog No.	Formulation	Size
F47411-0.4ML	In 1X PBS, pH 7.4, with 0.09% sodium azide	0.4 ml
F47411-0.08ML	In 1X PBS, pH 7.4, with 0.09% sodium azide	0.08 ml

[Bulk quote request](#)

Availability	1-3 business days
Species Reactivity	Human
Format	Antigen affinity purified
Host	Rabbit
Clonality	Polyclonal (rabbit origin)
Isotype	Rabbit Ig
Purity	Antigen affinity
UniProt	P06730
Applications	Western Blot : 1:1000 IHC (Paraffin) : 1:50-1:100 Flow Cytometry : 1:10-1:50
Limitations	This EIF4E antibody is available for research use only.



EIF4E antibody flow cytometric analysis of HL-60 cells (bottom histogram) compared to a [negative control](#) (top histogram). FITC-conjugated goat-anti-rabbit secondary Ab was used for the analysis.



IHC analysis of FFPE human testis tissue stained with EIF4E antibody



Western blot analysis of EIF4E antibody and HL-60 lysate. Predicted molecular weight ~27 kDa.

Description

EIF4E is a eukaryotic translation initiation factor involved in directing ribosomes to the cap structure of mRNAs. It is a 27-kD polypeptide that exists as both a free form and as part of a multiprotein complex termed EIF4F. The EIF4E polypeptide is the rate-limiting component of the eukaryotic translation apparatus and is involved in the mRNA-ribosome binding step of eukaryotic protein synthesis. The other subunits of EIF4F are a 50-kD polypeptide, termed EIF4A (see MIM 601102), that possesses ATPase and RNA helicase activities, and a 220-kD polypeptide, EIF4G.

Application Notes

Titration of the EIF4E antibody may be required due to differences in protocols and secondary/substrate sensitivity.

Immunogen

This EIF4E antibody was produced from rabbits immunized with a recombinant protein from human VGFR2.

Storage

Aliquot the EIF4E antibody and store frozen at -20oC or colder. Avoid repeated freeze-thaw cycles.