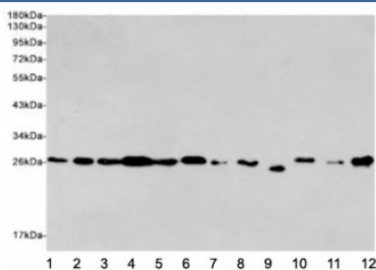


EIF4E Antibody [clone 8C8-C10-C12] (F54054)

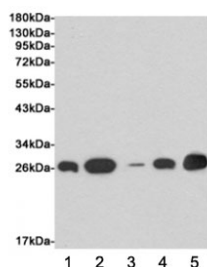
Catalog No.	Formulation	Size
F54054-0.1ML	In PBS with 50% glycerol and 0.03% ProClin 300	0.1 ml

[Bulk quote request](#)

Availability	1-3 business days
Species Reactivity	Human, Mouse, Rat
Format	Purified
Host	Mouse
Clonality	Monoclonal (mouse origin)
Isotype	Mouse IgG1
Clone Name	8C8-C10-C12
Purity	Protein G affinity
UniProt	P06730
Applications	Western Blot : 1:1000
Limitations	This EIF4E antibody is available for research use only.



Western blot testing of human 1) Jurkat, 2) HeLa, 3) MCF7, 4) K562, 5) rat C6, 6) mouse NIH3T3, 7) rat PC12, 8) human HepG2, 9) hamster CHO-K1, 10) human Raji, 11) mouse Raw264.7 and 12) human Ramos cell lysates using EIF4E antibody at 1:2000. Predicted molecular weight ~27 kDa.



Western blot testing of human 1) MDA-MB-468, 2) ZR75-1, 3) MCF7, 4) T47D and 5) hamster CHO-K1 cell lysates using EIF4E antibody at 1:1000. Predicted molecular weight ~27 kDa.

Description

Recognizes and binds the 7-methylguanosine-containing mRNA cap during an early step in the initiation of protein synthesis and facilitates ribosome binding by inducing the unwinding of the mRNAs secondary structures. Component of the CYFIP1-EIF4E-FMR1 complex which binds to the mRNA cap and mediates translational repression. In the CYFIP1-EIF4E-FMR1 complex this subunit mediates the binding to the mRNA cap. [UniProt]

Additional EIF4E antibody formats and validation data are available on our main [EIF4E Antibody](#) page.

Application Notes

The stated application concentrations are suggested starting points. Titration of the EIF4E antibody may be required due to differences in protocols and secondary/substrate sensitivity.

Immunogen

A human recombinant protein was used as the immunogen for this EIF4E antibody.

Storage

Store the EIF4E antibody at -20oC.