

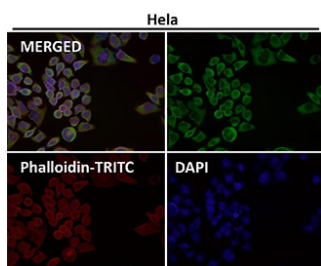
## EIF3A Antibody / Eukaryotic translation initiation factor 3 subunit A [clone 31E29] (FY12073)

Catalog No.	Formulation	Size
FY12073	Rabbit IgG in phosphate buffered saline, pH 7.4, 150mM NaCl, 0.02% sodium azide and 50% glycerol, 0.4-0.5mg/ml BSA	100 ul

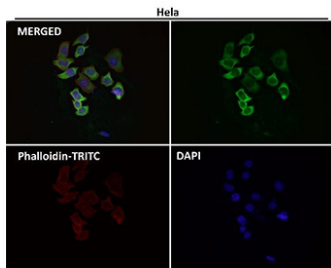
Recombinant **RABBIT MONOCLONAL**

[Bulk quote request](#)

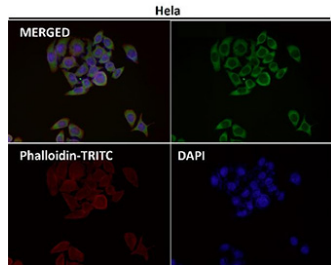
<b>Availability</b>	2-3 weeks
<b>Species Reactivity</b>	Human, Mouse, Rat
<b>Format</b>	Liquid
<b>Host</b>	Rabbit
<b>Clonality</b>	Recombinant Rabbit Monoclonal
<b>Isotype</b>	Rabbit IgG
<b>Clone Name</b>	31E29
<b>Purity</b>	Affinity-chromatography
<b>Buffer</b>	Rabbit IgG in phosphate buffered saline, pH 7.4, 150mM NaCl, 0.02% sodium azide and 50% glycerol, 0.4-0.5mg/ml BSA.
<b>UniProt</b>	Q14152
<b>Applications</b>	Western Blot : 1:500-1:2000 Immunohistochemistry : 1:50-1:200 Immunocytochemistry/Immunofluorescence : 1:50-1:200
<b>Limitations</b>	This EIF3A antibody is available for research use only.



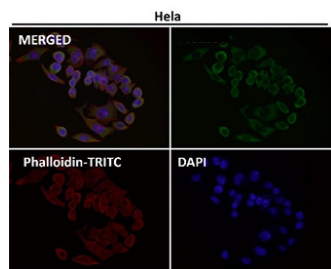
Immunofluorescent analysis using the EIF3A antibody (green) at 1:50 dilution.



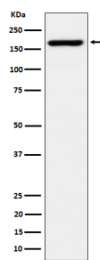
Immunofluorescent analysis using the EIF3A antibody (green) at 1:50 dilution.



Immunofluorescent analysis using the EIF3A antibody (green) at 1:150 dilution.



Immunofluorescent analysis using the EIF3A antibody (green) at 1:500 dilution.



Western blot analysis of eIF3A expression in Jurkat cell lysate using EIF3A antibody.

## Description

EIF3A antibody detects eukaryotic translation initiation factor 3 subunit A, the largest subunit of the EIF3 complex. EIF3A is a central scaffold protein that coordinates the assembly of other EIF3 subunits, promoting formation of the 43S preinitiation complex. This step is essential for recruiting mRNA and initiating protein synthesis. EIF3A contributes to translation of specific mRNAs involved in cell cycle progression, signaling, and stress adaptation.

Research using EIF3A antibody has highlighted the protein's role in both normal cellular growth and cancer biology. EIF3A is frequently overexpressed in tumors, where it selectively enhances translation of oncogenes and suppresses translation of tumor suppressors. This imbalance contributes to tumor proliferation, survival, and metastasis. Studies have linked EIF3A to lung cancer, breast cancer, and hepatocellular carcinoma, making it a valuable biomarker and potential therapeutic target.

Beyond cancer, EIF3A is essential for embryonic development and cellular stress responses. Its regulation ensures that cells adapt translation rates during nutrient deprivation, hypoxia, or DNA damage. EIF3A dysfunction disrupts protein homeostasis, leading to impaired cell survival or uncontrolled growth. Because of this, EIF3A has become an important research focus in studies of translation control and disease mechanisms.

Antibodies against EIF3A are validated for western blot, immunohistochemistry, immunofluorescence, and immunoprecipitation. These reagents enable researchers to monitor EIF3A protein levels, examine subcellular localization, and analyze interactions within the EIF3 complex. Clone-based versions provide specificity required to distinguish EIF3A from other EIF3 subunits.

NSJ Bioreagents supplies this EIF3A antibody to support research in translation initiation, cancer pathways, and developmental biology.

## **Application Notes**

Optimal dilution of the EIF3A antibody should be determined by the researcher.

## **Immunogen**

A synthesized peptide derived from human eIF3A was used as the immunogen for the EIF3A antibody.

## **Storage**

Store the EIF3A antibody at -20oC.