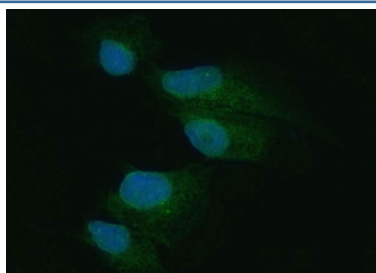


EIF2AK1 Antibody / Eukaryotic translation initiation factor 2-alpha kinase 1 / PKR (RQ7687)

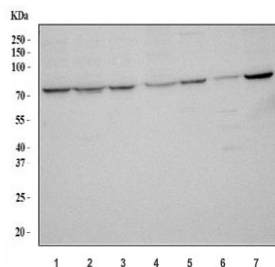
Catalog No.	Formulation	Size
RQ7687	0.5mg/ml if reconstituted with 0.2ml sterile DI water	100 ug

[Bulk quote request](#)

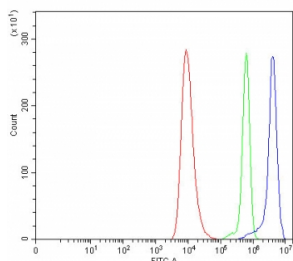
Availability	1-3 business days
Species Reactivity	Human, Mouse, Rat
Format	Antigen affinity purified
Clonality	Polyclonal (rabbit origin)
Isotype	Rabbit IgG
Purity	Antigen affinity purified
Buffer	Lyophilized from 1X PBS with 2% Trehalose
UniProt	Q9BQI3
Localization	Cytoplasmic
Applications	Western Blot : 0.5-1ug/ml Immunohistochemistry (FFPE) : 2-5ug/ml Immunofluorescence : 5ug/ml Direct ELISA : 0.1-0.5ug/ml
Limitations	This EIF2AK1 antibody is available for research use only.



Immunofluorescent staining of FFPE human A549 cells with EIF2AK1 antibody (green) and DAPI nuclear stain (blue). HIER: steam section in pH6 citrate buffer for 20 min.



Western blot testing of human 1) HeLa, 2) 293T, 3) MCF7, 4) K562, 5) PANC-1, 6) A431 and 7) U-251 cell lysate with EIF2AK1 antibody. Predicted molecular weight ~62 kDa but routinely observed at 68-72 kDa.



Flow cytometry testing of human HEL cells with EIF2AK1 antibody at 1ug/million cells (blocked with goat sera); Red=cells alone, Green=isotype control, Blue= EIF2AK1 antibody.

Description

Eukaryotic translation initiation factor 2-alpha kinase 1 is an enzyme that in humans is encoded by the EIF2AK1 gene. The protein encoded by this gene acts at the level of translation initiation to downregulate protein synthesis in response to stress. The encoded protein is a kinase that can be inactivated by hemin. Two transcript variants encoding different isoforms have been found for this gene.

Application Notes

Optimal dilution of the EIF2AK1 antibody should be determined by the researcher.

Immunogen

E. coli-derived recombinant human protein (amino acids E37-D508) was used as the immunogen for the EIF2AK1 antibody.

Storage

After reconstitution, the EIF2AK1 antibody can be stored for up to one month at 4oC. For long-term, aliquot and store at -20oC. Avoid repeated freezing and thawing.