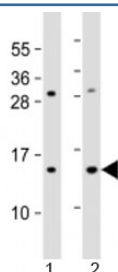


## EIF1 Antibody / Eukaryotic translation initiation factor 1 (F53885)

Catalog No.	Formulation	Size
F53885-0.2ML	In 1X PBS, pH 7.4, with 0.09% sodium azide	0.2 ml
F53885-0.05ML	In 1X PBS, pH 7.4, with 0.09% sodium azide	0.05 ml

[Bulk quote request](#)

<b>Availability</b>	1-3 business days
<b>Species Reactivity</b>	Human, Mouse
<b>Predicted Reactivity</b>	Bovine
<b>Format</b>	Antigen affinity purified
<b>Host</b>	Rabbit
<b>Clonality</b>	Polyclonal (rabbit origin)
<b>Isotype</b>	Rabbit Ig
<b>Purity</b>	Antigen affinity
<b>UniProt</b>	P41567
<b>Applications</b>	Western Blot : 1:1000-2000
<b>Limitations</b>	This EIF1 antibody is available for research use only.



Western blot testing of 1) human HL-60 and 2) mouse Neuro-2a cell lysate with EIF1 antibody at 1:2000. Predicted molecular weight: 13 kDa.

## Description

Eukaryotic translation initiation factor 1 (EIF1, EIF1A) is necessary for scanning and involved in initiation site selection. Promotes the assembly of 48S ribosomal complexes at the authentic initiation codon of a conventional capped mRNA.

## Application Notes

Titration of the EIF1 antibody may be required due to differences in protocols and secondary/substrate sensitivity.

## **Immunogen**

A portion of amino acids 11-41 from human EIF1A was used as the immunogen for the EIF1 antibody.

## **Storage**

Aliquot the EIF1 antibody and store frozen at -20oC or colder. Avoid repeated freeze-thaw cycles.