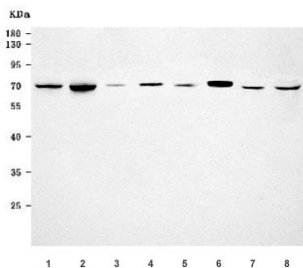


EHD4 Antibody / EH domain-containing protein 4 (RQ7717)

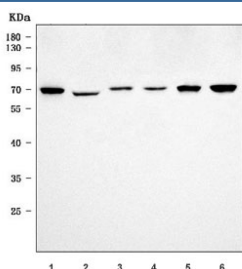
Catalog No.	Formulation	Size
RQ7717	0.5mg/ml if reconstituted with 0.2ml sterile DI water	100 ug

Bulk quote request

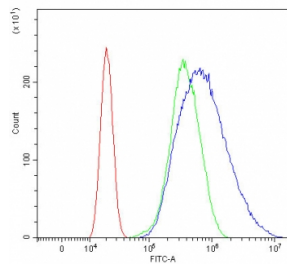
Availability	1-3 business days
Species Reactivity	Human, Mouse, Rat, Monkey
Format	Antigen affinity purified
Host	Rabbit
Clonality	Polyclonal (rabbit origin)
Isotype	Rabbit IgG
Purity	Antigen affinity purified
Buffer	Lyophilized from 1X PBS with 2% Trehalose
UniProt	Q9H223
Applications	Western Blot : 0.5-1ug/ml Flow Cytometry : 1-3ug/million cells Direct ELISA : 0.1-0.5ug/ml
Limitations	This EHD4 antibody is available for research use only.



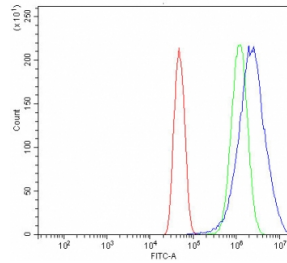
Western blot testing of 1) rat pancreas, 2) rat heart, 3) rat testis, 4) rat C6, 5) mouse pancreas, 6) mouse heart, 7) mouse testis and 8) mouse RAW264.7 cell lysate with EHD4 antibody. Predicted molecular weight ~61 kDa.



Western blot testing of 1) human HeLa, 2) human HepG2, 3) monkey heart, 4) human placenta, 5) human Caco-2 and 6) human PC-3 cell lysate with EHD4 antibody. Predicted molecular weight ~61 kDa.



Flow cytometry testing of human U-2 OS cells with EHD4 antibody at 1ug/million cells (blocked with goat sera); Red=cells alone, Green=isotype control, Blue= EHD4 antibody.



Flow cytometry testing of human U-251 cells with EHD4 antibody at 1ug/million cells (blocked with goat sera); Red=cells alone, Green=isotype control, Blue= EHD4 antibody.

Description

EH-domain containing 4, also known as EHD4, is a human gene belonging to the EHD protein family. Enables cadherin binding activity. Involved in endocytic recycling and protein homooligomerization. Located in endoplasmic reticulum and recycling endosome membrane.

Application Notes

Optimal dilution of the EHD4 antibody should be determined by the researcher.

Immunogen

E. coli-derived recombinant human protein (amino acids R12-D541) was used as the immunogen for the EHD4 antibody.

Storage

After reconstitution, the EHD4 antibody can be stored for up to one month at 4oC. For long-term, aliquot and store at -20oC. Avoid repeated freezing and thawing.