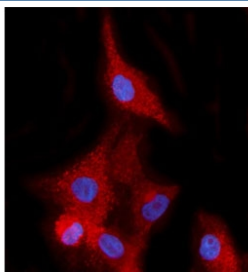


## EHD2 Antibody (RQ6476)

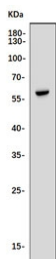
Catalog No.	Formulation	Size
RQ6476	0.5mg/ml if reconstituted with 0.2ml sterile DI water	100 ug

[Bulk quote request](#)

<b>Availability</b>	1-3 business days
<b>Species Reactivity</b>	Human
<b>Format</b>	Antigen affinity purified
<b>Host</b>	Rabbit
<b>Clonality</b>	Polyclonal (rabbit origin)
<b>Isotype</b>	Rabbit IgG
<b>Purity</b>	Affinity purified
<b>Buffer</b>	Lyophilized from 1X PBS with 2% Trehalose
<b>UniProt</b>	Q9NZN4
<b>Localization</b>	Cytoplasmic
<b>Applications</b>	Western Blot : 1-2ug/ml Immunofluorescence : 5ug/ml
<b>Limitations</b>	This EHD2 antibody is available for research use only.



Immunofluorescent staining of FFPE human A549 cells with EHD2 antibody (red) and DAPI nuclear stain (blue). HIER: steam section in pH6 citrate buffer for 20 min.



Western blot testing of human U-87 MG cell lysate with EHD2 antibody. Predicted molecular weight ~61 kDa.

## Description

EH-domain containing 2, also known as EHD2, is a human gene belonging to the EHD protein family. This gene encodes a member of the EH domain-containing protein family. These proteins are characterized by a C-terminal EF-hand domain, a nucleotide-binding consensus site at the N terminus and a bipartite nuclear localization signal. The encoded protein interacts with the actin cytoskeleton through an N-terminal domain and also binds to an EH domain-binding protein through the C-terminal EH domain. This interaction appears to connect clathrin-dependent endocytosis to actin, suggesting that this gene product participates in the endocytic pathway.

## Application Notes

Optimal dilution of the EHD2 antibody should be determined by the researcher.

## Immunogen

Amino acids KKQLILKLPVIFAKIQLEHH from the human protein were used as the immunogen for the EHD2 antibody.

## Storage

After reconstitution, the EHD2 antibody can be stored for up to one month at 4oC. For long-term, aliquot and store at -20oC. Avoid repeated freezing and thawing.