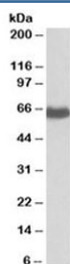


EHD2 Antibody (R33325)

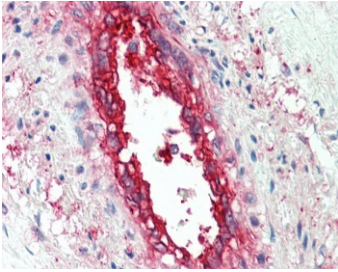
Catalog No.	Formulation	Size
R33325-100UG	0.5 mg/ml in 1X TBS, pH7.3, with 0.5% BSA (US sourced) and 0.02% sodium azide	100 ug

[Bulk quote request](#)

Availability	1-3 business days
Species Reactivity	Human
Predicted Reactivity	Mouse, Rat, Dog, Cow
Format	Antigen affinity purified
Host	Goat
Clonality	Polyclonal (goat origin)
Isotype	Goat Ig
Purity	Antigen affinity
Gene ID	30846
Localization	Cytoplasmic, membrane
Applications	Western Blot : 1-3ug/ml IHC (FFPE) : 5ug/ml ELISA (peptide) LOD : 1:64000
Limitations	This EHD2 antibody is available for research use only.



Western blot testing of human placenta lysate with EHD2 antibody at 0.1ug/ml. Predicted molecular weight: ~61 kDa.



IHC testing of FFPE human vessel with EHD2 antibody at ug/ml. HIER: steamed antigen retrieval with pH6 citrate buffer; AP-staining.

Description

Additional name(s) for this target protein: EH-domain containing 2

Application Notes

Optimal dilution of the EHD2 antibody should be determined by the researcher.

1. This EHD1 antibody will detect both EHD1 and EHD2.

Immunogen

Amino acids CRLVPPSKRRHKGSA were used as the immunogen for this EHD2 antibody.

Storage

Aliquot and store the EHD2 antibody at -20oC.