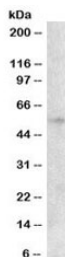


EGR2 Antibody (R34195)

Catalog No.	Formulation	Size
R34195-100UG	0.5 mg/ml in 1X TBS, pH7.3, with 0.5% BSA (US sourced) and 0.02% sodium azide	100 ug

[Bulk quote request](#)

Availability	1-3 business days
Species Reactivity	Human
Predicted Reactivity	Mouse, Rat, Dog
Format	Antigen affinity purified
Host	Goat
Clonality	Polyclonal (goat origin)
Isotype	Goat Ig
Purity	Antigen affinity
Gene ID	1959
Applications	Western Blot : 2-6ug/ml ELISA (peptide) LOD : 1:8000
Limitations	This EGR2 antibody is available for research use only.



Western blot testing of HepG2 cell lysate with EGR2 antibody at 2ug/ml.
Expected/observed molecular weight ~53 kDa.

Description

Additional name(s) for this target protein: Early growth response 2

Application Notes

Optimal dilution of the EGR2 antibody should be determined by the researcher.

Immunogen

Amino acids HGTAGPDRKPFPC were used as the immunogen for this EGR2 antibody.

Storage

Aliquot and store the EGR2 antibody at -20oC.