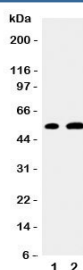


EGR2 Antibody (R31299)

Catalog No.	Formulation	Size
R31299	0.5mg/ml if reconstituted with 0.2ml sterile DI water	100 ug

Bulk quote request

Availability	1-3 business days
Species Reactivity	Human, Mouse, Rat
Format	Antigen affinity purified
Clonality	Polyclonal (rabbit origin)
Isotype	Rabbit IgG
Purity	Antigen affinity
Buffer	Lyophilized from 1X PBS with 2.5% BSA and 0.025% sodium azide/thimerosal
UniProt	P11161
Applications	Western Blot : 0.5-1ug/ml
Limitations	This EGR2 antibody is available for research use only.



Western blot testing of EGR2 antibody and Lane 1: mouse NIH3T3; 2: human MCF-7 cell lysate. Expected/observed molecular weight ~53kDa.

Description

Early growth response protein 2 is a protein that in humans is encoded by the EGR2 gene. This gene is mapped to 10q21.3. The protein encoded by this gene is a transcription factor with three tandem C2H2-type zinc fingers. Defects in this gene are associated with Charcot-Marie-Tooth disease type 1D(CMT1D), Charcot-Marie-Tooth disease type 4E(CMT4E), and with Dejerine-Sottas syndrome(DSS). EGR2 assists with SUMO1 conjugation to its coregulators NAB1 and NAB2, whose sumoylation down-regulates EGR2 own transcriptional activity.

Application Notes

The stated application concentrations are suggested starting amounts. Titration of the EGR2 antibody may be required

due to differences in protocols and secondary/substrate sensitivity.

Immunogen

An amino acid sequence from the N-terminus of human Early growth response protein 2 (TMSQTQPDLDHLYSPP) was used as the immunogen for this EGR2 antibody.

Storage

After reconstitution, the EGR2 antibody can be stored for up to one month at 4oC. For long-term, aliquot and store at -20oC. Avoid repeated freezing and thawing.