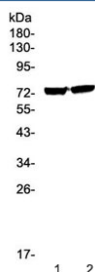


EGR1 Antibody (RQ4357)

| Catalog No. | Formulation | Size |
|-------------|---|--------|
| RQ4357 | 0.5mg/ml if reconstituted with 0.2ml sterile DI water | 100 ug |

Bulk quote request

| | |
|---------------------------|---|
| Availability | 1-3 business days |
| Species Reactivity | Human |
| Format | Antigen affinity purified |
| Clonality | Polyclonal (rabbit origin) |
| Isotype | Rabbit IgG |
| Purity | Antigen affinity purified |
| Buffer | Lyophilized from 1X PBS with 2% Trehalose and 0.025% sodium azide |
| UniProt | P18146 |
| Localization | Nuclear, cytoplasmic |
| Applications | Western Blot : 0.5-1ug/ml Direct ELISA : 0.1-0.5ug/ml |
| Limitations | This EGR1 antibody is available for research use only. |



Western blot testing of human 1) 22RV1 and 2) PANC-1 cell lysate with EGR1 antibody at 0.5ug/ml. Predicted molecular weight: 57 kDa (monomer), ~110 kDa (cytoplasmic dimer), ~75 kDa (nuclear dimer).

Description

Early growth response protein 1, also known as ZIF268 or NGFIA, is a protein that in humans is encoded by the EGR1 gene. The protein encoded by this gene belongs to the EGR family of C2H2-type zinc-finger proteins. This gene is mapped to 5q31.2. It is a nuclear protein and functions as a transcriptional regulator. The products of target genes it activates are required for differentiation and mitogenesis. Studies suggest this is a cancer suppressor gene. It has a distinct pattern of expression in the brain, and its induction has been shown to be associated with neuronal activity. Several studies suggest it has a role in neuronal plasticity.

Application Notes

Optimal dilution of the EGR1 antibody should be determined by the researcher.

Immunogen

A recombinant human protein corresponding to amino acids A239-R327 was used as the immunogen for the EGR1 antibody.

Storage

After reconstitution, the EGR1 antibody can be stored for up to one month at 4°C. For long-term, aliquot and store at -20°C. Avoid repeated freezing and thawing.