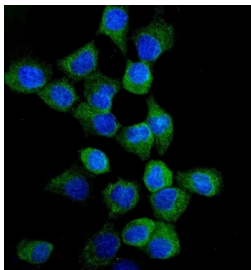


## EGFR Antibody (R31449)

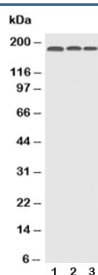
Catalog No.	Formulation	Size
R31449	0.5mg/ml if reconstituted with 0.2ml sterile DI water	100 ug

### Bulk quote request

<b>Availability</b>	1-3 business days
<b>Species Reactivity</b>	Human
<b>Format</b>	Antigen affinity purified
<b>Host</b>	Rabbit
<b>Clonality</b>	Polyclonal (rabbit origin)
<b>Isotype</b>	Rabbit IgG
<b>Purity</b>	Antigen affinity
<b>Buffer</b>	Lyophilized from 1X PBS with 2.5% BSA and 0.025% sodium azide
<b>Gene ID</b>	1956
<b>Applications</b>	Western Blot : 0.5-1ug/ml Immunofluorescence : 2-4ug/ml
<b>Limitations</b>	This EGFR antibody is available for research use only.



Immunofluorescent staining of FFPE human A431 cells with EGFR antibody (green) and DAPI nuclear stain (blue). HIER: steam section in pH6 citrate buffer for 20 min.



Western blot testing of EGFR antibody and human lysates 1: HeLa; 2: A549; 3: A431 lysate. Expected molecular weight: ~134/170 kDa (unmodified/glycosylated).

## Description

EGFR Antibody binds epidermal growth factor receptor (EGFR; ErbB1; HER1 in humans), the cell-surface receptor for members of the epidermal growth factor family (EGF-family) of extracellular protein ligands. It is a member of the ErbB family of receptors, a subfamily of four closely related receptor tyrosine kinases: EGFR (ErbB1), HER2/c-neu (ErbB2), Her 3 (ErbB3) and Her 4 (ErbB4). It exists on the cell surface and is activated by binding of its specific ligands, including epidermal growth factor and transforming growth factor alpha (TGFalpha). EGFR and its ligands are cell signaling molecules involved in diverse cellular functions, including cell proliferation, differentiation, motility, and survival, and in tissue development. Mutations that lead to overexpression or overactivity have been associated with a number of cancers, including lung cancer and glioblastoma multiform.

Explore our [EGFR Antibody \(31G7\)](#) page for a broader view of EGFR expression and extensively validated antibody performance across applications.

## Application Notes

The stated application concentrations are suggested starting points. Titration of the EGFR antibody may be required due to differences in protocols and secondary/substrate sensitivity.

## Immunogen

Human partial recombinant protein (AA 25-346) was used as the immunogen for this EGFR antibody.

## Storage

After reconstitution, the EGFR antibody can be stored for up to one month at 4oC. For long-term, aliquot and store at -20oC. Avoid repeated freezing and thawing.