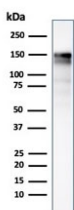


EGFR Antibody / Epidermal Growth Factor Receptor [clone GFR/2341] (V3828)

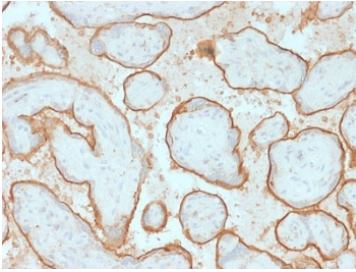
Catalog No.	Formulation	Size
V3828-100UG	0.2 mg/ml in 1X PBS with 0.1 mg/ml BSA (US sourced) and 0.05% sodium azide	100 ug
V3828-20UG	0.2 mg/ml in 1X PBS with 0.1 mg/ml BSA (US sourced) and 0.05% sodium azide	20 ug
V3828SAF-100UG	1 mg/ml in 1X PBS; BSA free, sodium azide free	100 ug

Bulk quote request

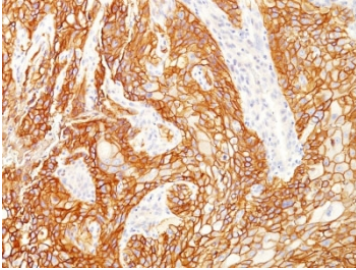
Availability	1-3 business days
Species Reactivity	Human
Format	Purified
Host	Mouse
Clonality	Monoclonal (mouse origin)
Isotype	Mouse IgG2b, kappa
Clone Name	GFR/2341
Purity	Protein G affinity chromatography
UniProt	P00533
Localization	Cell surface
Applications	Immunohistochemistry (FFPE) : 1-2ug/ml for 30 min at RT Western Blot : 1-2ug/ml
Limitations	This EGFR antibody is available for research use only.



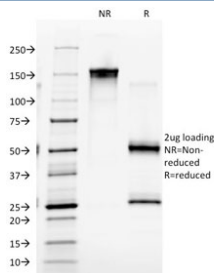
Western blot testing of A431 lysate using EGFR antibody (clone GFR/2341). Expected molecular weight: 134-180 kDa depending on glycosylation level.



IHC testing of FFPE human placenta with EGFR antibody (clone GFR/2341). Required HIER: boiling tissue sections in pH 9 10mM Tris with 1mM EDTA for 10-20 min.

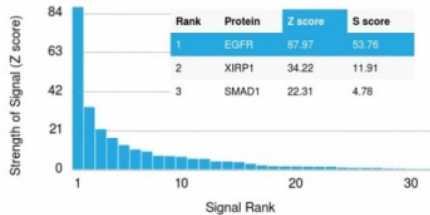


IHC testing of FFPE human lung squamous cell carcinoma with EGFR antibody (clone GFR/2341). Required HIER: boiling tissue sections in pH 9 10mM Tris with 1mM EDTA for 10-20 min.



SDS-PAGE analysis of purified, BSA-free EGFR antibody (clone GFR/2341) as confirmation of integrity and purity.

Human Protein Microarray Specificity Validation



Analysis of HuProt(TM) microarray containing more than 19,000 full-length human proteins using EGFR antibody (clone GFR/2341). These results demonstrate the foremost specificity of the GFR/2341 mAb. Z- and S- score: The Z-score represents the strength of a signal that an antibody (in combination with a fluorescently-tagged anti-IgG secondary Ab) produces when binding to a particular protein on the HuProt(TM) array. Z-scores are described in units of standard deviations (SD's) above the mean value of all signals generated on that array. If the targets on the HuProt(TM) are arranged in descending order of the Z-score, the S-score is the difference (also in units of SD's) between the Z-scores. The S-score therefore represents the relative target specificity of an Ab to its intended target.

Description

EGFR Antibody recognizes Epidermal growth factor receptor, a membrane-associated receptor tyrosine kinase that regulates cellular responses to growth factor stimulation. Epidermal growth factor receptor, also widely referred to as EGFR, ErbB1, and HER1, is a central component of epithelial signaling networks that control cell proliferation, survival, migration, and differentiation. EGFR Antibody is used in research settings to study receptor expression and distribution in normal epithelial tissues and in experimental models where growth factor signaling is biologically relevant. The EGFR protein is primarily localized to the plasma membrane, where ligand binding initiates receptor activation and downstream signaling events.

Epidermal growth factor receptor is encoded by the EGFR gene and undergoes ligand-induced dimerization followed by autophosphorylation of intracellular tyrosine residues. These phosphorylation events recruit signaling adaptors that activate pathways such as MAPK, PI3K-AKT, and STAT signaling, coordinating cellular growth and adaptive responses. EGFR Antibody enables investigation of EGFR expression patterns and membrane localization, supporting studies focused on signal transduction, receptor regulation, and epithelial cell biology across a wide range of experimental systems.

EGFR signaling is tightly regulated under physiological conditions, with receptor internalization, recycling, and degradation playing important roles in signal attenuation. Disruption of these regulatory mechanisms can lead to sustained receptor signaling and altered cellular behavior. EGFR Antibody supports research into receptor trafficking, turnover, and spatial regulation at the cell surface and within intracellular compartments, providing insight into how Epidermal growth factor receptor activity is controlled in normal cells.

In cancer-related research, altered expression or dysregulated signaling of Epidermal growth factor receptor is frequently observed in epithelial-derived tumors. EGFR Antibody clone GFR/2341 provides a tool for examining EGFR expression and localization in disease-relevant models, supporting investigations into receptor-driven signaling pathways, tumor biology, and growth factor responsiveness without implying clinical or diagnostic use.

Explore our [EGFR Antibody \(31G7\)](#) page for a broader view of EGFR expression and extensively validated antibody performance across applications.

Application Notes

Titering of the EGFR antibody may be required for optimal performance.

Immunogen

A portion of amino acids 344-492 from the human protein was used as the immunogen for the EGFR antibody.

Storage

Store the EGFR antibody at 2-8oC (with azide) or aliquot and store at -20oC or colder (without azide).