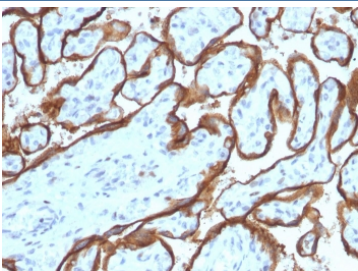


EGFR Antibody / EGF Receptor [clone SPM341] (V7800)

| Catalog No. | Formulation | Size |
|----------------|--|--------|
| V7800-100UG | 0.2 mg/ml in 1X PBS with 0.1 mg/ml BSA (US sourced) and 0.05% sodium azide | 100 ug |
| V7800-20UG | 0.2 mg/ml in 1X PBS with 0.1 mg/ml BSA (US sourced) and 0.05% sodium azide | 20 ug |
| V7800SAF-100UG | 1 mg/ml in 1X PBS; BSA free, sodium azide free | 100 ug |

[Bulk quote request](#)

| | |
|---------------------------|---|
| Availability | 1-3 business days |
| Species Reactivity | Human |
| Format | Purified |
| Host | Mouse |
| Clonality | Monoclonal (mouse origin) |
| Isotype | Mouse IgG2b, kappa |
| Clone Name | SPM341 |
| Purity | Protein G affinity chromatography |
| UniProt | P00533 |
| Localization | Cell surface |
| Applications | Immunohistochemistry (FFPE) : 1-2ug/ml Western Blot : 1-2ug/ml |
| Limitations | This EGFR antibody is available for research use only. |



IHC testing of FFPE human placenta with EGFR antibody (clone SPM341). Required HIER: boiling tissue sections in pH 9 10mM Tris with 1mM EDTA for 10-20 min.

Description

This MAb recognizes a protein of 170kDa, identified as EGFR. EGFR is type I receptor tyrosine kinase with sequence homology to erbB-1, -2, -3 -4 or HER-1, -2, -3 -4. It binds to Epidermal Growth Factor (EGF), Transforming Growth Factor- α (TGF- α), Heparin-binding EGF (HB-EGF), amphiregulin, betacellulin and epiregulin. EGFR is overexpressed in tumors of breast, brain, bladder, lung, gastric, head neck, esophagus, cervix, vulva, ovary, and endometrium. It is predominantly present in squamous cell carcinomas.

Application Notes

Optimal dilution of the EGFR antibody should be determined by the researcher.

Immunogen

A human recombinant partial protein (amino acids 344-492) was used as the immunogen for the EGFR antibody.

Storage

Store the EGFR antibody at 2-8°C (with azide) or aliquot and store at -20°C or colder (without azide).