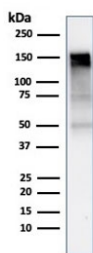


EGFR Antibody / EGF Receptor [clone rGFR/1667] (V7874)

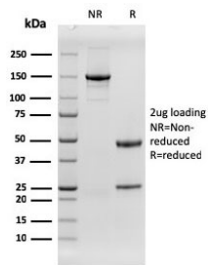
Catalog No.	Formulation	Size
V7874-100UG	0.2 mg/ml in 1X PBS with 0.1 mg/ml BSA (US sourced) and 0.05% sodium azide	100 ug
V7874-20UG	0.2 mg/ml in 1X PBS with 0.1 mg/ml BSA (US sourced) and 0.05% sodium azide	20 ug
V7874SAF-100UG	1 mg/ml in 1X PBS; BSA free, sodium azide free	100 ug

Bulk quote request

Availability	1-3 business days
Species Reactivity	Human
Format	Purified
Host	Mouse
Clonality	Monoclonal (mouse origin)
Isotype	Mouse IgG1, kappa
Clone Name	rGFR/1667
Purity	Protein G affinity chromatography
UniProt	P00533
Applications	Immunohistochemistry (FFPE) : 1-2ug/ml Western Blot : 1-2ug/ml
Limitations	This EGFR antibody is available for research use only.



Western blot testing of human A431 cell lysate with EGFR antibody (clone rGFR/1667).
Expected molecular weight: ~134/170 kDa (unmodified/glycosylated).



SDS-PAGE analysis of purified, BSA-free EGFR antibody (clone rGFR/1667) as confirmation of integrity and purity.

Description

The protein encoded by this gene is a transmembrane glycoprotein that is a member of the protein kinase superfamily. This protein is a receptor for members of the epidermal growth factor family. EGFR is a cell surface protein that binds to epidermal growth factor. Binding of the protein to a ligand induces receptor dimerization and tyrosine autophosphorylation and leads to cell proliferation. Mutations in this gene are associated with lung cancer. Multiple alternatively spliced transcript variants that encode different protein isoforms have been found for this gene.

Application Notes

Optimal dilution of the EGFR antibody should be determined by the researcher.

Immunogen

Recombinant full-length human Epidermal growth factor receptor protein was used as the immunogen for the EGFR antibody.

Storage

Store the EGFR antibody at 2-8°C (with azide) or aliquot and store at -20°C or colder (without azide).