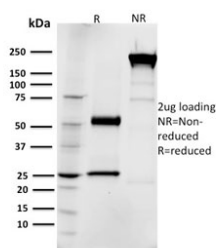


EGFR Antibody / EGF Receptor [clone R1] (V7873)

Catalog No.	Formulation	Size
V7873-100UG	0.2 mg/ml in 1X PBS with 0.1 mg/ml BSA (US sourced) and 0.05% sodium azide	100 ug
V7873-20UG	0.2 mg/ml in 1X PBS with 0.1 mg/ml BSA (US sourced) and 0.05% sodium azide	20 ug
V7873SAF-100UG	1 mg/ml in 1X PBS; BSA free, sodium azide free	100 ug

[Bulk quote request](#)

Availability	1-3 business days
Species Reactivity	Human
Format	Purified
Host	Mouse
Clonality	Monoclonal (mouse origin)
Isotype	Mouse IgG1, kappa
Clone Name	R1
Purity	Protein G affinity chromatography
UniProt	P00533
Applications	Western Blot : 1-2ug/ml Immunohistochemistry (FFPE) : 1-2ug/ml
Limitations	This EGFR antibody is available for research use only.



SDS-PAGE analysis of purified, BSA-free EGFR antibody (clone R1) as confirmation of integrity and purity.

Description

The protein encoded by this gene is a transmembrane glycoprotein that is a member of the protein kinase superfamily.

This protein is a receptor for members of the epidermal growth factor family. EGFR is a cell surface protein that binds to epidermal growth factor. Binding of the protein to a ligand induces receptor dimerization and tyrosine autophosphorylation and leads to cell proliferation. Mutations in this gene are associated with lung cancer. Multiple alternatively spliced transcript variants that encode different protein isoforms have been found for this gene.

Application Notes

Optimal dilution of the EGFR antibody should be determined by the researcher.

Immunogen

A recombinant human partial protein (amino acids 6-273) was used as the immunogen for the EGFR antibody.

Storage

Store the EGFR antibody at 2-8oC (with azide) or aliquot and store at -20oC or colder (without azide).