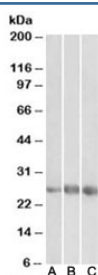


## EGFL7 Antibody (R34184)

Catalog No.	Formulation	Size
R34184-100UG	0.5 mg/ml in 1X TBS, pH7.3, with 0.5% BSA (US sourced) and 0.02% sodium azide	100 ug

[Bulk quote request](#)

Availability	1-3 business days
Species Reactivity	Human
Format	Antigen affinity purified
Clonality	Polyclonal (goat origin)
Isotype	Goat Ig
Purity	Antigen affinity
Gene ID	51162
Applications	Western Blot : 1-3ug/ml ELISA (peptide) LOD : 1:128000
Limitations	This EGFL7 antibody is available for research use only.



Western blot testing of human heart [A], kidney [B] and lung [C] lysates with EGFL7 antibody at 1ug/ml. Predicted molecular weight: ~29/27kDa (pro/mature form).

## Description

Additional name(s) for this target protein: EGF-like-domain, multiple 7

## Application Notes

Optimal dilution of the EGFL7 antibody should be determined by the researcher.

## Immunogen

Amino acids HGDPVSESFVQR were used as the immunogen for this EGFL7 antibody.

## Storage

Aliquot and store the EGFL7 antibody at -20oC.