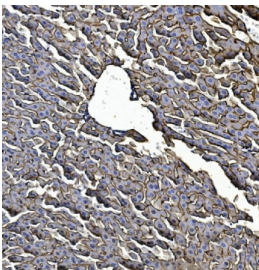


Egf receptor Antibody (RQ6913)

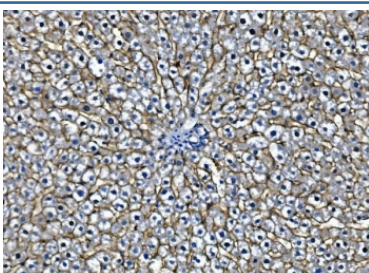
Catalog No.	Formulation	Size
RQ6913	0.5mg/ml if reconstituted with 0.2ml sterile DI water	100 ug

[Bulk quote request](#)

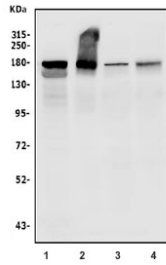
Availability	1-3 business days
Species Reactivity	Mouse, Rat
Format	Antigen affinity purified
Host	Rabbit
Clonality	Polyclonal (rabbit origin)
Isotype	Rabbit IgG
Purity	Affinity purified
Buffer	Lyophilized from 1X PBS with 2% Trehalose and 0.025% sodium azide
UniProt	Q01279
Applications	Western Blot : 0.5-1ug/ml Immunohistochemistry : 1-2ug/ml
Limitations	This Egf receptor antibody is available for research use only.



Egf receptor Antibody Mouse Liver IHC. Immunohistochemistry staining of FFPE mouse liver with Egf receptor antibody. HIER: boil tissue sections in pH8 EDTA for 20 min and allow to cool before testing.



Egf receptor Antibody Rat Liver IHC. Immunohistochemistry staining of FFPE rat liver with Egf receptor antibody. HIER: boil tissue sections in pH8 EDTA for 20 min and allow to cool before testing.



Egf receptor Antibody Mouse/Rat Liver, Lung, Spleen WB. Western blot testing of 1) rat liver, 2) mouse liver, 3) mouse spleen and 4) mouse lung tissue lysate with Egf receptor antibody. Expected molecular weight: 134-180 kDa depending on glycosylation level.

Description

The epidermal growth factor receptor (EGFR; ErbB-1; HER1 in humans) is a transmembrane protein that is a receptor for members of the epidermal growth factor family (EGF family) of extracellular protein ligands. It is mapped to 11 A2; 11 9.41 cM. The protein encoded by this gene is a transmembrane glycoprotein that is a member of the protein kinase superfamily. This protein is a receptor for members of the epidermal growth factor family. EGFR is a cell surface protein that binds to epidermal growth factor. Binding of the protein to a ligand induces receptor dimerization and tyrosine autophosphorylation and leads to cell proliferation. Mutations in this gene are associated with lung cancer.

Explore our [EGFR Antibody \(31G7\)](#) page for a broader view of EGFR expression and extensively validated antibody performance across applications.

Application Notes

Optimal dilution of the Egf receptor antibody should be determined by the researcher.

Immunogen

Recombinant mouse protein (amino acids L25-P596) was used as the immunogen for the Egf receptor antibody.

Storage

After reconstitution, the Egf receptor antibody can be stored for up to one month at 4°C. For long-term, aliquot and store at -20°C. Avoid repeated freezing and thawing.