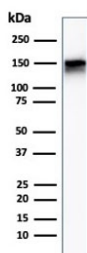


## EGF Receptor Antibody / Epidermal Growth Factor Receptor [clone F4] (V7405)

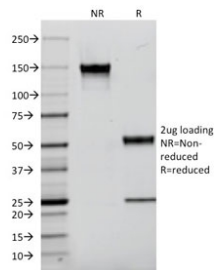
Catalog No.	Formulation	Size
V7405-100UG	0.2 mg/ml in 1X PBS with 0.1 mg/ml BSA (US sourced) and 0.05% sodium azide	100 ug
V7405-20UG	0.2 mg/ml in 1X PBS with 0.1 mg/ml BSA (US sourced) and 0.05% sodium azide	20 ug
V7405SAF-100UG	1 mg/ml in 1X PBS; BSA free, sodium azide free	100 ug

### Bulk quote request

<b>Availability</b>	1-3 business days
<b>Species Reactivity</b>	Human
<b>Format</b>	Purified
<b>Host</b>	Mouse
<b>Clonality</b>	Monoclonal (mouse origin)
<b>Isotype</b>	Mouse IgG1, kappa
<b>Clone Name</b>	F4
<b>Purity</b>	Protein G affinity chromatography
<b>UniProt</b>	P00533
<b>Localization</b>	Cell surface
<b>Applications</b>	Western Blot : 1-2ug/ml
<b>Limitations</b>	This EGF Receptor antibody is available for research use only.



Western blot testing of human A431 cell lysate with EGF Receptor antibody (clone F4).  
Expected molecular weight: 134-180 kDa depending on glycosylation level.



SDS-PAGE analysis of purified, BSA-free EGF Receptor antibody (clone F4) as confirmation of integrity and purity.

## Description

This MAb recognizes a protein of 170kDa, identified as EGFR. EGFR is type I receptor tyrosine kinase with sequence homology to erbB-1, -2, -3 -4 or HER-1, -2, -3 -4. It binds to Epidermal Growth Factor (EGF), Transforming Growth Factor- $\alpha$  (TGF- $\alpha$ ), Heparin-binding EGF (HB-EGF), amphiregulin, betacellulin and epiregulin. EGFR is overexpressed in tumors of breast, brain, bladder, lung, gastric, head & neck, esophagus, cervix, vulva, ovary, and endometrium. It is predominantly present in squamous cell carcinomas.

Explore our [EGFR Antibody \(31G7\)](#) page for a broader view of EGFR expression and extensively validated antibody performance across applications.

## Application Notes

Titering of the EGF Receptor antibody may be required for optimal performance.

## Immunogen

Amino acids 985-996 from the human protein were used as the immunogen for the EGF Receptor antibody.

## Storage

Store the EGF Receptor antibody at 2-8°C (with azide) or aliquot and store at -20°C or colder (without azide).