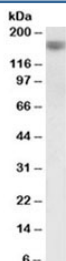


EGF Antibody (R36053)

Catalog No.	Formulation	Size
R36053-100UG	0.5 mg/ml in 1X TBS, pH7.3, with 0.5% BSA (US sourced) and 0.02% sodium azide	100 ug

[Bulk quote request](#)

Availability	1-3 business days
Species Reactivity	Human
Predicted Reactivity	Dog
Format	Antigen affinity purified
Clonality	Polyclonal (goat origin)
Isotype	Goat Ig
Purity	Antigen affinity
Gene ID	1950
Localization	Cytoplasmic
Applications	Western Blot : 1-3ug/ml ELISA (peptide) LOD : 1:128000
Limitations	This EGF antibody is available for research use only.



Western blot testing of human prostate lysate with EGF antibody at 1ug/ml. Predicted band size : 134 kDa but routinely observed at 134-160kDa.

Description

Additional name(s) for this target protein: Epidermal growth factor

Application Notes

Optimal dilution of the EGF antibody should be determined by the researcher.

Immunogen

Amino acids SRQERVCNIEKNVS were used as the immunogen for this EGF antibody. The amino acid sequence used as immunogen is from the extracellular portion of the protein.

Storage

Aliquot and store the EGF antibody at -20oC.