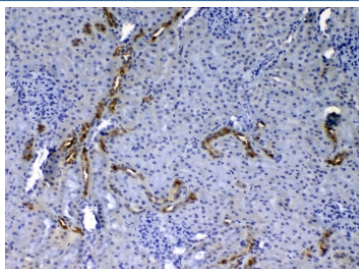


Egf Antibody (R32831)

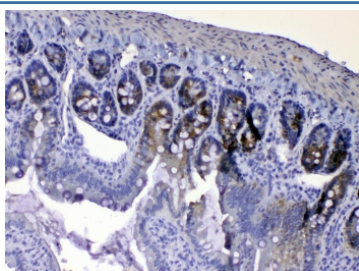
Catalog No.	Formulation	Size
R32831	0.5mg/ml if reconstituted with 0.2ml sterile DI water	100 ug

Bulk quote request

Availability	1-3 business days
Species Reactivity	Rat
Format	Antigen affinity purified
Host	Rabbit
Clonality	Polyclonal (rabbit origin)
Isotype	Rabbit IgG
Purity	Antigen affinity
Buffer	Lyophilized from 1X PBS with 2% Trehalose and 0.025% sodium azide
UniProt	P07522
Applications	Western Blot : 0.5-1ug/ml IHC (FFPE) : 1-2ug/ml ELISA (recombinant Rat Protein) : 0.1-0.5ug/ml
Limitations	This Egf antibody is available for research use only.



IHC testing of FFPE rat kidney tissue with Egf antibody at 1ug/ml. Required HIER: steam section in pH6 citrate buffer for 20 min and allow to cool prior to testing.



IHC testing of FFPE rat small intestine tissue with Egf antibody at 1ug/ml. Required HIER: steam section in pH6 citrate buffer for 20 min and allow to cool prior to testing.

kDa
72-
55-
43-
34-
26-

17-

10-

Western blot testing of recombinant rat partial protein with Egf antibody at 0.5ug/ml.

Description

EGF is known as epidermal growth factor. This gene encodes a member of the epidermal growth factor superfamily. The encoded preproprotein is proteolytically processed to generate the 53-amino acid epidermal growth factor peptide. This protein acts a potent mitogenic factor that plays an important role in the growth, proliferation and differentiation of numerous cell types. Additionally, it acts by binding with high affinity to the cell surface receptor, epidermal growth factor receptor. Defects in this gene are the cause of hypomagnesemia type 4. Dysregulation of this gene has been associated with the growth and progression of certain cancers. Alternative splicing results in multiple transcript variants, at least one of which encodes a preproprotein that is proteolytically processed.

Application Notes

Optimal dilution of the Egf antibody should be determined by the researcher.

Immunogen

A recombinant rat protein corresponding to amino acids N974-R1026 was used as the immunogen for the Egf antibody.

Storage

After reconstitution, the Egf antibody can be stored for up to one month at 4oC. For long-term, aliquot and store at -20oC. Avoid repeated freezing and thawing.