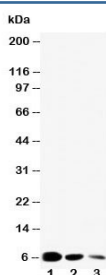


EGF Antibody (R30469)

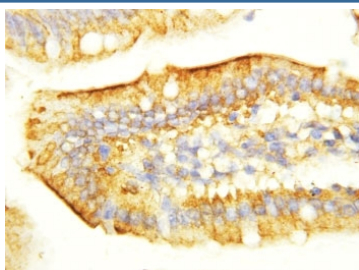
Catalog No.	Formulation	Size
R30469	0.5mg/ml if reconstituted with 0.2ml sterile DI water	100 ug

Bulk quote request

Availability	1-3 business days
Species Reactivity	Mouse
Format	Antigen affinity purified
Host	Rabbit
Clonality	Polyclonal (rabbit origin)
Isotype	Rabbit IgG
Purity	Antigen affinity
Buffer	Lyophilized from 1X PBS with 2.5% BSA and 0.025% sodium azide/thimerosal
UniProt	P01132
Localization	Cytoplasmic
Applications	Western Blot : 0.5-1ug/ml IHC (FFPE) : 0.5-1ug/ml
Limitations	This EGF antibody is available for research use only.



Western blot testing of EGF antibody and Lane 1: recombinant mouse partial protein
10ng; 2: 5ng; 3: 2.5ng



IHC-P: EGF antibody testing of mouse intestine tissue

Description

Epidermal growth factor (EGF) is a growth factor that plays an important role in the regulation of cell growth, proliferation and differentiation by binding to its receptor EGFR. EGF locus is mapped to 4q21-4qter. Human EGF is a mature 6045-Da protein with 53 amino acid residues and three intramolecular disulfide bonds. EGF results in cellular proliferation, differentiation, and survival while plays an important physiological role in the maintenance of oro-esophageal and gastric tissue integrity.

Application Notes

The stated application concentrations are suggested starting amounts. Titration of the EGF antibody may be required due to differences in protocols and secondary/substrate sensitivity.

Immunogen

An amino acid sequence from the C-terminus of mouse EGF (YSGDRCQTRDLRWWELR) was used as the immunogen for this EGF antibody.

Storage

After reconstitution, the EGF antibody can be stored for up to one month at 4°C. For long-term, aliquot and store at -20°C. Avoid repeated freezing and thawing.