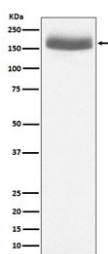


EGF Antibody / Epidermal Growth Factor [clone ABOF-5] (RQ4869)

Catalog No.	Formulation	Size
RQ4869	Antibody in PBS with 0.02% sodium azide, 50% glycerol and 0.4-0.5mg/ml BSA	100 ul

[Bulk quote request](#)

Availability	1-2 weeks
Species Reactivity	Human
Format	Purified
Host	Rabbit
Clonality	Rabbit Monoclonal
Isotype	Rabbit IgG
Clone Name	ABOF-5
Purity	Affinity purified
UniProt	P01133
Applications	Western Blot : 1:500-1:2000
Limitations	This EGF antibody is available for research use only.



Western blot testing of human urine protein lysate with EGF antibody. Predicted molecular weight: ~134 kDa but routinely observed at 134-160 kDa.

Description

EGF stimulates the growth of various epidermal and epithelial tissues in vivo and in vitro and of some fibroblasts in cell culture. Magnesiotropic hormone that stimulates magnesium reabsorption in the renal distal convoluted tubule via engagement of EGFR and activation of the magnesium channel TRPM6. [UniProt]

Application Notes

Optimal dilution of the EGF antibody should be determined by the researcher.

Immunogen

A synthetic peptide specific to human EGF was used as the immunogen for the EGF antibody.

Storage

Store the EGF antibody at -20oC.