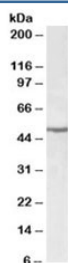


EEF1A2 Antibody (R34872)

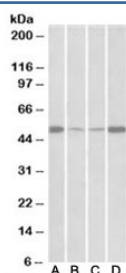
Catalog No.	Formulation	Size
R34872-100UG	0.5 mg/ml in 1X TBS, pH7.3, with 0.5% BSA (US sourced) and 0.02% sodium azide	100 ug

[Bulk quote request](#)

Availability	1-3 business days
Species Reactivity	Human, Mouse, Rat
Predicted Reactivity	Cow, Dog
Format	Antigen affinity purified
Host	Goat
Clonality	Polyclonal (goat origin)
Isotype	Goat Ig
Purity	Antigen affinity
Gene ID	1917
Applications	Western Blot : 0.5-2ug/ml ELISA (peptide) LOD : 1:8000
Limitations	This EEF1A2 antibody is available for research use only.



Western blot testing of Jurkat lysate with EEF1A2 antibody at 0.5ug/ml. Predicted molecular weight: ~51kDa.



Western blot of mouse (A) and rat (B) skeletal muscle and mouse (C) and rat (D) heart lysate with EEF1A2 antibody at 0.5ug/ml. Predicted molecular weight: ~51kDa.

Description

Additional name(s) for this target protein: Eukaryotic translation elongation factor 1 alpha 2, EEF1AL, EF-1-alpha-2; EEF1A2

Application Notes

Optimal dilution of the EEF1A2 antibody should be determined by the researcher.

Immunogen

Amino acids NPATVPFVPIS were used as the immunogen for this EEF1A2 antibody.

Storage

Aliquot and store the EEF1A2 antibody at -20oC.