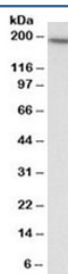


## EEA1 Antibody (R35258)

Catalog No.	Formulation	Size
R35258-100UG	0.5 mg/ml in 1X TBS, pH7.3, with 0.5% BSA (US sourced) and 0.02% sodium azide	100 ug

[Bulk quote request](#)

Availability	1-3 business days
Species Reactivity	Human
Format	Antigen affinity purified
Host	Goat
Clonality	Polyclonal (goat origin)
Isotype	Goat Ig
Purity	Antigen affinity
Gene ID	8411
Applications	Western Blot : 0.3-1ug/ml ELISA (peptide) LOD : 1:128000
Limitations	This EEA1 antibody is available for research use only.



Western blot testing of HEK293 lysate with EEA1 antibody at 0.3ug/ml. Predicted molecular weight ~162kDa.

## Description

Additional name(s) for this target protein: Early endosome antigen 1, MST105, MSTP105

## Application Notes

Optimal dilution of the EEA1 antibody should be determined by the researcher.

## Immunogen

Amino acids QETKIQHEELNNRIQ were used as the immunogen for this EEA1 antibody.

## **Storage**

Aliquot and store the EEA1 antibody at -20oC.