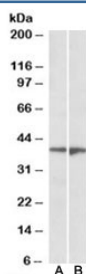


EDG8 Antibody (R35907)

Catalog No.	Formulation	Size
R35907-100UG	0.5 mg/ml in 1X TBS, pH7.3, with 0.5% BSA (US sourced) and 0.02% sodium azide	100 ug

[Bulk quote request](#)

Availability	1-3 business days
Species Reactivity	Human
Predicted Reactivity	Cow, Pig
Format	Antigen affinity purified
Host	Goat
Clonality	Polyclonal (goat origin)
Isotype	Goat Ig
Purity	Antigen affinity
Gene ID	53637
Applications	Western Blot : 1-3ug/ml ELISA (peptide) LOD : 1:2000
Limitations	This EDG8 antibody is available for research use only.



Western blot testing of human frontal cortex [A] and amygdala [B] lysates with EDG8 antibody at 1ug/ml. Predicted molecular weight: ~42kDa.

Description

Additional name(s) for this target protein: Endothelial differentiation, sphingolipid G-protein-coupled receptor, 8; sphingosine-1-phosphate receptor 5 (S1PR5)

Application Notes

Optimal dilution of the EDG8 antibody should be determined by the researcher.

Immunogen

Amino acids SGSERSSPQRDGLD were used as the immunogen for this EDG8 antibody.

Storage

Aliquot and store the EDG8 antibody at -20oC.