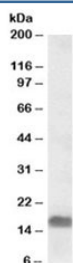


EDF1 Antibody (R34847)

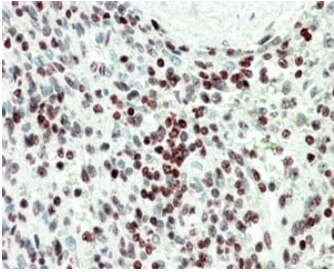
Catalog No.	Formulation	Size
R34847-100UG	0.5 mg/ml in 1X TBS, pH7.3, with 0.5% BSA (US sourced) and 0.02% sodium azide	100 ug

[Bulk quote request](#)

Availability	1-3 business days
Species Reactivity	Human
Predicted Reactivity	Mouse, Pig, Rat
Format	Antigen affinity purified
Host	Goat
Clonality	Polyclonal (goat origin)
Isotype	Goat Ig
Purity	Antigen affinity
Gene ID	8721
Applications	Western Blot : 0.3-1ug/ml Immunohistochemistry (FFPE) : 5-10ug/ml ELISA (peptide) LOD : 1:128000
Limitations	This EDF1 antibody is available for research use only.



Western blot testing of A549 lysate with EDF1 antibody at 0.3ug/ml. Predicted molecular weight: ~16kDa.



IHC staining of FFPE human spleen with EDF1 antibody at 5ug/ml. HIER: steamed with pH6 citrate buffer, AP-staining.

Description

Additional name(s) for this target protein: Endothelial differentiation-related factor 1

Application Notes

Optimal dilution of the EDF1 antibody should be determined by the researcher.

Immunogen

Amino acids NKQHSITKNTAKLDR were used as the immunogen for this EDF1 antibody.

Storage

Aliquot and store the EDF1 antibody at -20oC.