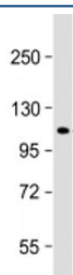


ECT2 Antibody [clone 1691CT516.3.3] (F53947)

Catalog No.	Formulation	Size
F53947-0.2ML	In 1X PBS, pH 7.4, with 0.09% sodium azide	0.2 ml
F53947-0.05ML	In 1X PBS, pH 7.4, with 0.09% sodium azide	0.05 ml

[Bulk quote request](#)

Availability	1-3 business days
Species Reactivity	Human
Format	Purified
Clonality	Monoclonal (mouse origin)
Isotype	Mouse IgG1, kappa
Clone Name	1691CT516.3.3
Purity	Protein G affinity chromatography
UniProt	Q9H8V3
Applications	Western Blot : 1:500-1000
Limitations	This ECT2 antibody is available for research use only.



Western blot testing of human 293T/17 cell lysate with ECT2 antibody at 1:1000.
Predicted molecular weight: 104 kDa.

Description

Epithelial cell-transforming sequence 2 oncogene is a guanine nucleotide exchange factor (GEF) that catalyzes the exchange of GDP for GTP. Promotes guanine nucleotide exchange on the Rho family members of small GTPases, like RHOA, RHOC, RAC1 and CDC42. Required for signal transduction pathways involved in the regulation of cytokinesis. Component of the centralspindlin complex that serves as a microtubule-dependent and Rho-mediated signaling required for the myosin contractile ring formation during the cell cycle cytokinesis. Regulates the translocation of RHOA from the central spindle to the equatorial region. Plays a role in the control of mitotic spindle assembly; regulates the activation of CDC42 in metaphase for the process of spindle fibers attachment to kinetochores before chromosome congression.

Involved in the regulation of epithelial cell polarity; participates in the formation of epithelial tight junctions in a polarity complex PARD3-PARD6-protein kinase PRKCQ-dependent manner. Plays a role in the regulation of neurite outgrowth. Inhibits phenobarbital (PB)- induced NR1I3 nuclear translocation. Stimulates the activity of RAC1 through its association with the oncogenic PARD6A-PRKCI complex in cancer cells, thereby acting to coordinately drive tumor cell proliferation and invasion. Also stimulates genotoxic stress-induced RHOB activity in breast cancer cells leading to their cell death.

Application Notes

Titration of the ECT2 antibody may be required due to differences in protocols and secondary/substrate sensitivity.

Immunogen

A partial recombinant protein corresponding to amino acids 200-460 from the human protein was used as the immunogen for the ECT2 antibody.

Storage

Aliquot the ECT2 antibody and store frozen at -20oC or colder. Avoid repeated freeze-thaw cycles.