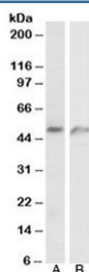


ECSM2 Antibody (R34867)

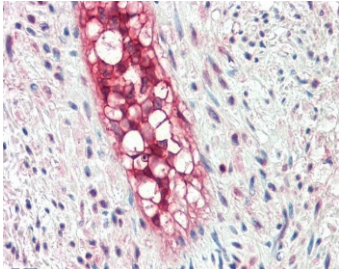
Catalog No.	Formulation	Size
R34867-100UG	0.5 mg/ml in 1X TBS, pH7.3, with 0.5% BSA (US sourced) and 0.02% sodium azide	100 ug

[Bulk quote request](#)

Availability	1-3 business days
Species Reactivity	Human
Format	Antigen affinity purified
Host	Goat
Clonality	Polyclonal (goat origin)
Isotype	Goat Ig
Purity	Antigen affinity
Gene ID	641700
Localization	Membrane
Applications	Western Blot : 1-3ug/ml IHC (FFPE) : 5ug/ml ELISA (peptide) LOD : 1:128000
Limitations	This ECSM2 antibody is available for research use only.



Western blot testing of human A) lung and B) umbilical cord lysates with ECSM2 antibody at 1ug/ml. Predicted molecular weight: ~21/40-60 kDa (unmodified/glycosylated).



IHC testing of FFPE human vessel with ECSM2 antibody at 5ug/ml. Required HIER: steamed antigen retrieval with pH6 citrate buffer; AP-staining.

Description

Additional name(s) for this target protein: Endothelial cell-specific marker 2; ECSCR; Endothelial cell surface expressed chemotaxis and apoptosis regulator; LOC641700

Application Notes

Optimal dilution of the ECSM2 antibody should be determined by the researcher.

Immunogen

Amino acids NNGKQSLSAEKVL were used as the immunogen for this ECSM2 antibody.

Storage

Aliquot and store the ECSM2 antibody at -20oC.

References (1)