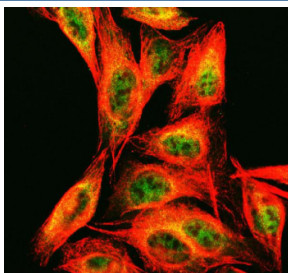


ECD Antibody / SGT1 / Protein Ecdysoneless homolog (RQ6765)

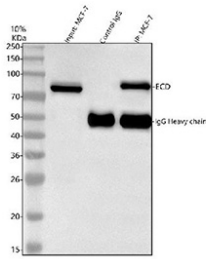
Catalog No.	Formulation	Size
RQ6765	0.5mg/ml if reconstituted with 0.2ml sterile DI water	100 ug

Bulk quote request

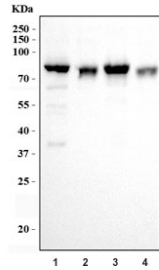
Availability	1-3 business days
Species Reactivity	Human
Format	Antigen affinity purified
Host	Rabbit
Clonality	Polyclonal (rabbit origin)
Isotype	Rabbit IgG
Purity	Antigen affinity purified
Buffer	Lyophilized from 1X PBS with 2% Trehalose
UniProt	O95905
Localization	Nuclear, cytoplasmic
Applications	Western Blot : 1-2ug/ml Immunofluorescence (FFPE) : 5ug/ml Flow Cytometry : 1-3ug/million cells Direct ELISA : 0.1-0.5ug/ml
Limitations	This ECD antibody is available for research use only.



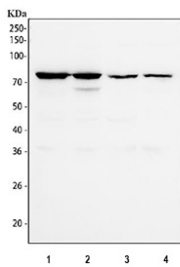
Immunofluorescent staining of FFPE human U-2 OS cells with ECD antibody (green) and Alpha Tubulin mAb (red). HIER: steam section in pH6 citrate buffer for 20 min.



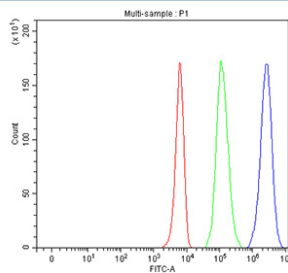
Immunoprecipitation of ECD protein from 500ug of human MCF7 whole cell lysate with 2ug of ECD antibody.



Western blot testing of human 1) PC-3, 2) Caco-2, 3) HL60 and 4) U-2 OS cell lysate with ECD antibody. Predicted molecular weight ~73 kDa.



Western blot testing of human 1) PC-3, 2) Caco-2, 3) K562 and 4) MCF7 cell lysate with ECD antibody. Predicted molecular weight ~73 kDa.



Flow cytometry testing of fixed and permeabilized human K562 cells with ECD antibody at 1ug/million cells (blocked with goat sera); Red=cells alone, Green=isotype control, Blue= CD59 antibody.

Description

Protein Ecdysoless homolog, known as ECD, is a conserved nuclear protein involved in cell cycle regulation, mRNA processing, and transcriptional control. ECD plays a critical role in the G1 to S phase transition and has been shown to interact with components of the retinoblastoma (Rb) pathway, making it an important factor in proliferation and oncogenesis. ECD has also been implicated in the stabilization and function of p53, further connecting it to cancer-related signaling networks.

Multiple isoforms of ECD exist due to alternative splicing events, which may influence the protein's functional specificity, subcellular localization, or interaction with molecular partners. These isoforms contribute to the complexity of ECD's biological roles across tissues and developmental stages. Understanding the differential expression and activity of these variants is crucial for deciphering ECD's full spectrum of cellular functions.

A high-quality ECD antibody is essential for detecting ECD protein in various experimental applications. Researchers commonly use an ECD antibody in techniques such as western blot, immunohistochemistry, immunofluorescence, and ELISA to examine protein expression, localization, and interaction patterns. The availability of reliable ECD antibody reagents allows for the investigation of both canonical and isoform-specific forms of ECD, supporting studies in cell cycle dynamics, cancer biology, and gene regulation.

Application Notes

Optimal dilution of the ECD antibody should be determined by the researcher.

Immunogen

Recombinant human protein (amino acids L50-Q567) was used as the immunogen for the ECD antibody.

Storage

After reconstitution, the ECD antibody can be stored for up to one month at 4°C. For long-term, aliquot and store at -20°C. Avoid repeated freezing and thawing.