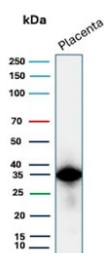


EBI3 Antibody / Epstein-Barr virus induced 3 [clone EBI3/8903] (V4604)

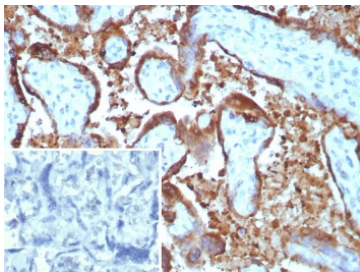
Catalog No.	Formulation	Size
V4604-100UG	0.2 mg/ml in 1X PBS with 0.1 mg/ml BSA (US sourced), 0.05% sodium azide	100 ug
V4604-20UG	0.2 mg/ml in 1X PBS with 0.1 mg/ml BSA (US sourced), 0.05% sodium azide	20 ug
V4604SAF-100UG	1 mg/ml in 1X PBS; BSA free, sodium azide free	100 ug

[Bulk quote request](#)

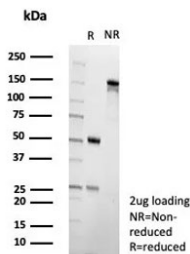
Availability	1-3 business days
Species Reactivity	Human
Format	Purified
Host	Mouse
Clonality	Monoclonal (mouse origin)
Isotype	Mouse IgG2b, kappa
Clone Name	EBI3/8903
Purity	Protein A/G affinity
UniProt	Q14213
Localization	Secreted
Applications	ELISA (Order BSA-free Format For Coating) : Immunohistochemistry (FFPE) : 1-2ug/ml for 30 min at RT Western Blot : 2-4ug/ml
Limitations	This EBI3 antibody is available for research use only.



Western blot testing of human placental tissue lysate with EBI3 antibody (clone EBI3/8903). Predicted molecular weight ~25 kDa but may be observed at higher molecular weights due to glycosylation.



IHC staining of FFPE human placental tissue with EBI3 antibody (clone EBI3/8903). Inset: PBS used in place of primary Ab (secondary Ab negative control). HIER: boil tissue sections in pH 9 10mM Tris with 1mM EDTA for 20 min and allow to cool before testing.



SDS-PAGE analysis of purified, BSA-free EBI3 antibody (clone EBI3/8903) as confirmation of integrity and purity.

Description

Epstein-Barr virus-induced gene 3 (Ebi3) is a widely expressed homolog to the interleukin IL-12 p40 subunit protein that forms a heterodimer with either IL-12 p35 or an IL-12 p35 homolog, p28, to create a new cytokine (IL-27). IL-27 is an early product of activated antigen-presenting cells and drives rapid clonal expansion of naive but not memory CD4⁺ T cells.

Application Notes

Optimal dilution of the EBI3 antibody should be determined by the researcher.

Immunogen

A recombinant partial protein sequence (within amino acids 366-466) from the human protein was used as the immunogen for the EBI3 antibody.

Storage

Aliquot the EBI3 antibody and store frozen at -20°C or colder. Avoid repeated freeze-thaw cycles.