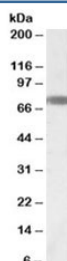


EBF1 Antibody (R34243)

Catalog No.	Formulation	Size
R34243-100UG	0.5 mg/ml in 1X TBS, pH7.3, with 0.5% BSA (US sourced) and 0.02% sodium azide	100 ug

[Bulk quote request](#)

Availability	1-3 business days
Species Reactivity	Human, Mouse
Predicted Reactivity	Rat
Format	Antigen affinity purified
Host	Goat
Clonality	Polyclonal (goat origin)
Isotype	Goat Ig
Purity	Antigen affinity
Gene ID	1879
Applications	Western Blot : 0.3-0.1ug/ml Immunoprecipitation : suitable ELISA (peptide) LOD : 1:64000
Limitations	This EBF1 antibody is available for research use only.



Western blot testing of human adipose lysate with EBF1 antibody at 0.3ug/ml. Predicted molecular weight: ~65kDa.

Description

Additional name(s) for this target protein: Early B-cell factor 1, OLF1

Application Notes

Optimal dilution of the EBF1 antibody should be determined by the researcher.

Immunogen

Amino acids HNQLPALANTSV were used as the immunogen for this EBF1 antibody.

Storage

Aliquot and store the EBF1 antibody at -20oC.