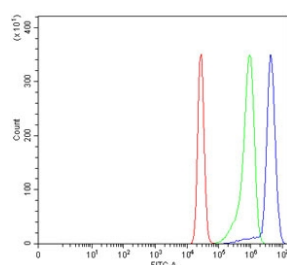


Early growth response protein 1 Antibody / EGR1 (RQ6978)

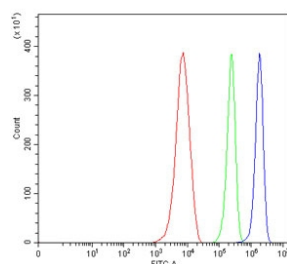
Catalog No.	Formulation	Size
RQ6978	0.5mg/ml if reconstituted with 0.2ml sterile DI water	100 ug

Bulk quote request

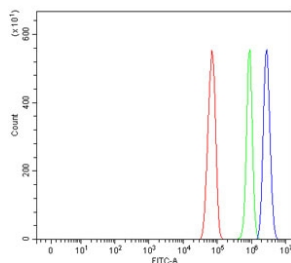
Availability	1-3 business days
Species Reactivity	Human, Mouse, Rat
Format	Antigen affinity purified
Clonality	Polyclonal (rabbit origin)
Isotype	Rabbit IgG
Purity	Antigen affinity purified
Buffer	Lyophilized from 1X PBS with 2% Trehalose
UniProt	P18146
Applications	Western Blot : 0.5-1 ug/ml Flow Cytometry : 1-3ug/million cells Direct ELISA : 0.1-0.5ug/ml
Limitations	This Early growth response protein 1 antibody is available for research use only.



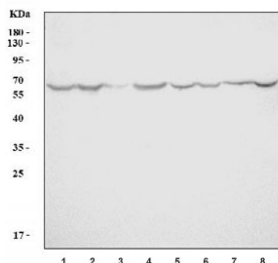
Flow cytometry testing of human K562 cells with Early growth response protein 1 antibody at 1ug/million cells (blocked with goat sera); Red=cells alone, Green=isotype control, Blue= Early growth response protein 1 antibody.



Flow cytometry testing of mouse RAW264.7 cells with Early growth response protein 1 antibody at 1ug/million cells (blocked with goat sera); Red=cells alone, Green=isotype control, Blue= Early growth response protein 1 antibody.



Flow cytometry testing of rat RH35 cells with Early growth response protein 1 antibody at 1ug/million cells (blocked with goat sera); Red=cells alone, Green=isotype control, Blue= Early growth response protein 1 antibody.



Western blot testing of 1) human K562, 2) human MCF-7, 3) human U-937, 4) human Jurkat, 5) rat brain, 6) rat PC-12, 7) mouse brain and 8) mouse RAW264.7 cell lysate with Early growth response protein 1 antibody. Predicted molecular weight: 57 kDa (monomer), ~110 kDa (cytoplasmic dimer), ~75 kDa (nuclear dimer).

Description

Early growth response protein 1, also known as ZIF268 or NGFIA, is a protein that in humans is encoded by the EGR1 gene. The protein encoded by this gene belongs to the EGR family of C2H2-type zinc-finger proteins. This gene is mapped to 5q31.2. It is a nuclear protein and functions as a transcriptional regulator. The products of target genes it activates are required for differentiation and mitogenesis. Studies suggest this is a cancer suppressor gene. It has a distinct pattern of expression in the brain, and its induction has been shown to be associated with neuronal activity. Several studies suggest it has a role in neuronal plasticity.

Application Notes

Optimal dilution of the Early growth response protein 1 antibody should be determined by the researcher.

Immunogen

Recombinant human protein (amino acids A2-M38) was used as the immunogen for the Early growth response protein 1 antibody.

Storage

After reconstitution, the Early growth response protein 1 antibody can be stored for up to one month at 4oC. For long-term, aliquot and store at -20oC. Avoid repeated freezing and thawing.